







# Patrón Rita / Rita Pattern

Por / By Andrea Condés

Talla / Size	
	A
	B
	C


NO IMPRIMAS TODAS LAS TALLAS

Es mucho más fácil si solo imprimes tu talla.

Es tan fácil como seleccionar este icono  en Adobe Acrobat antes de imprimir y ocultar las capas que no necesites.

DON'T PRINT ALL SIZES!

It is much easier if you print only the size or sizes you are interested in.

It's as easy as selecting this icon  in Adobe Acrobat before printing and hide the layers of the sizes you don't need.

5 cm

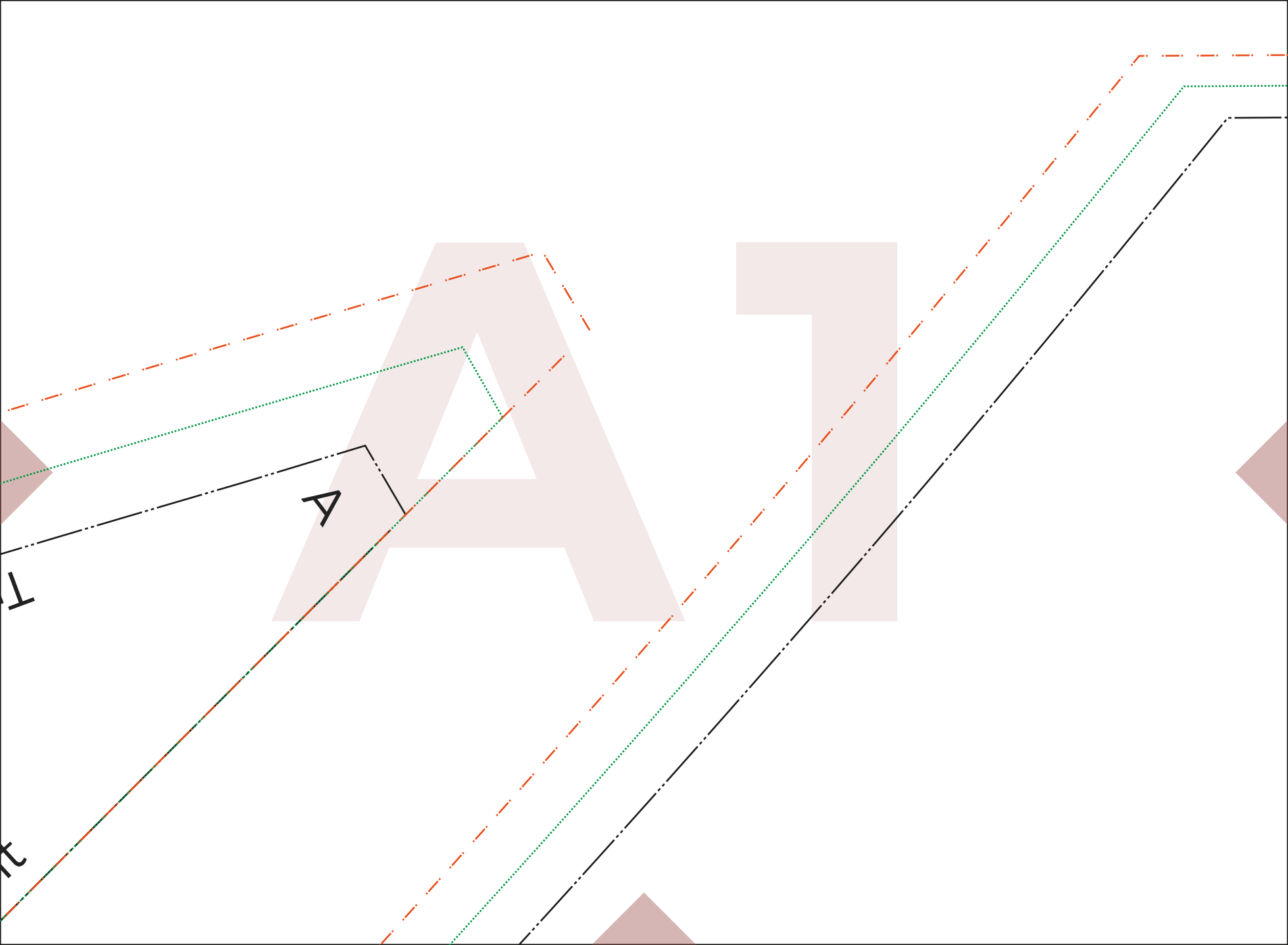
5 cm

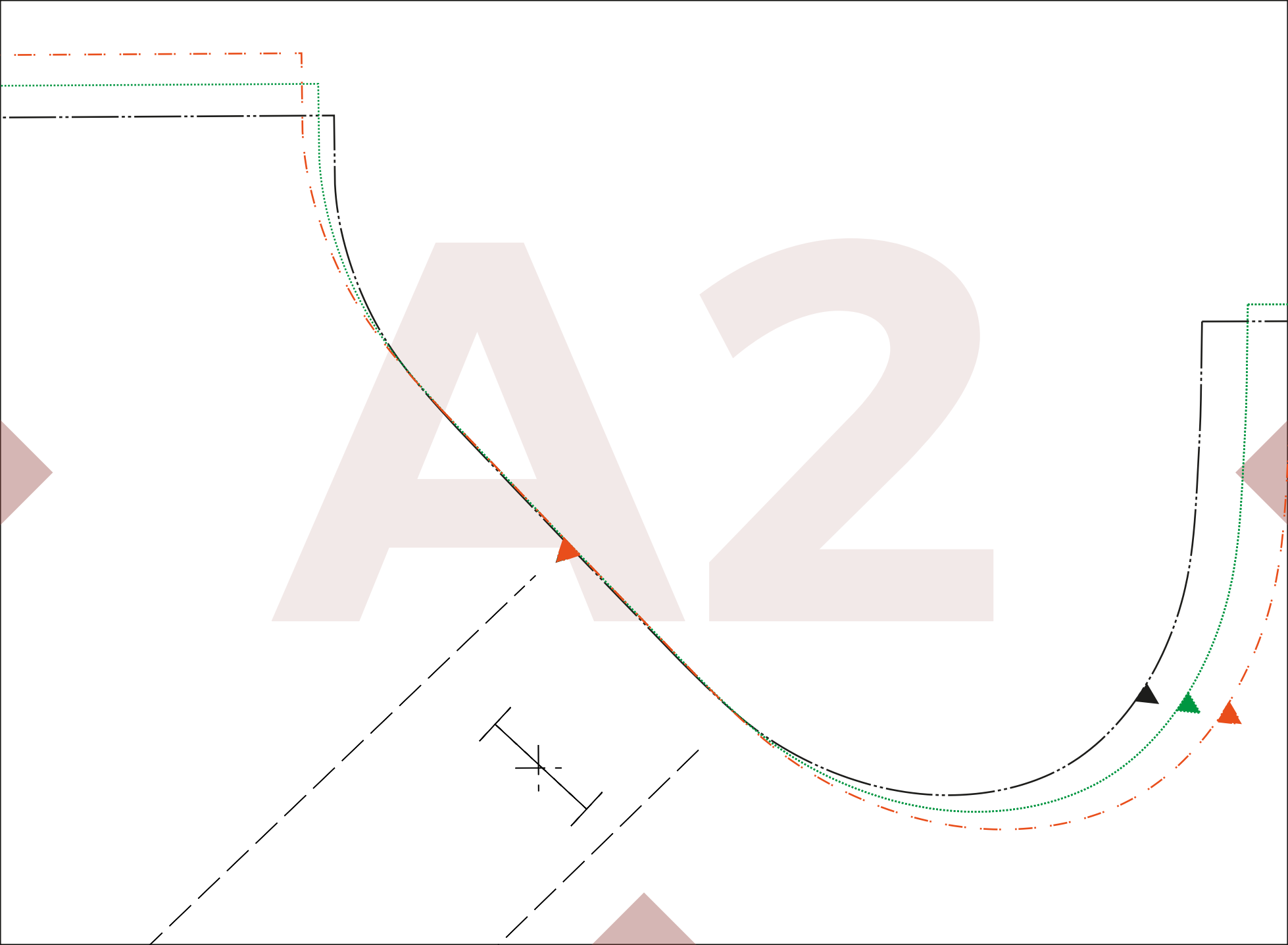
TEST  
SQUARE

PRUEBA  
IMPRESIÓN

rasero / Back

/ Front



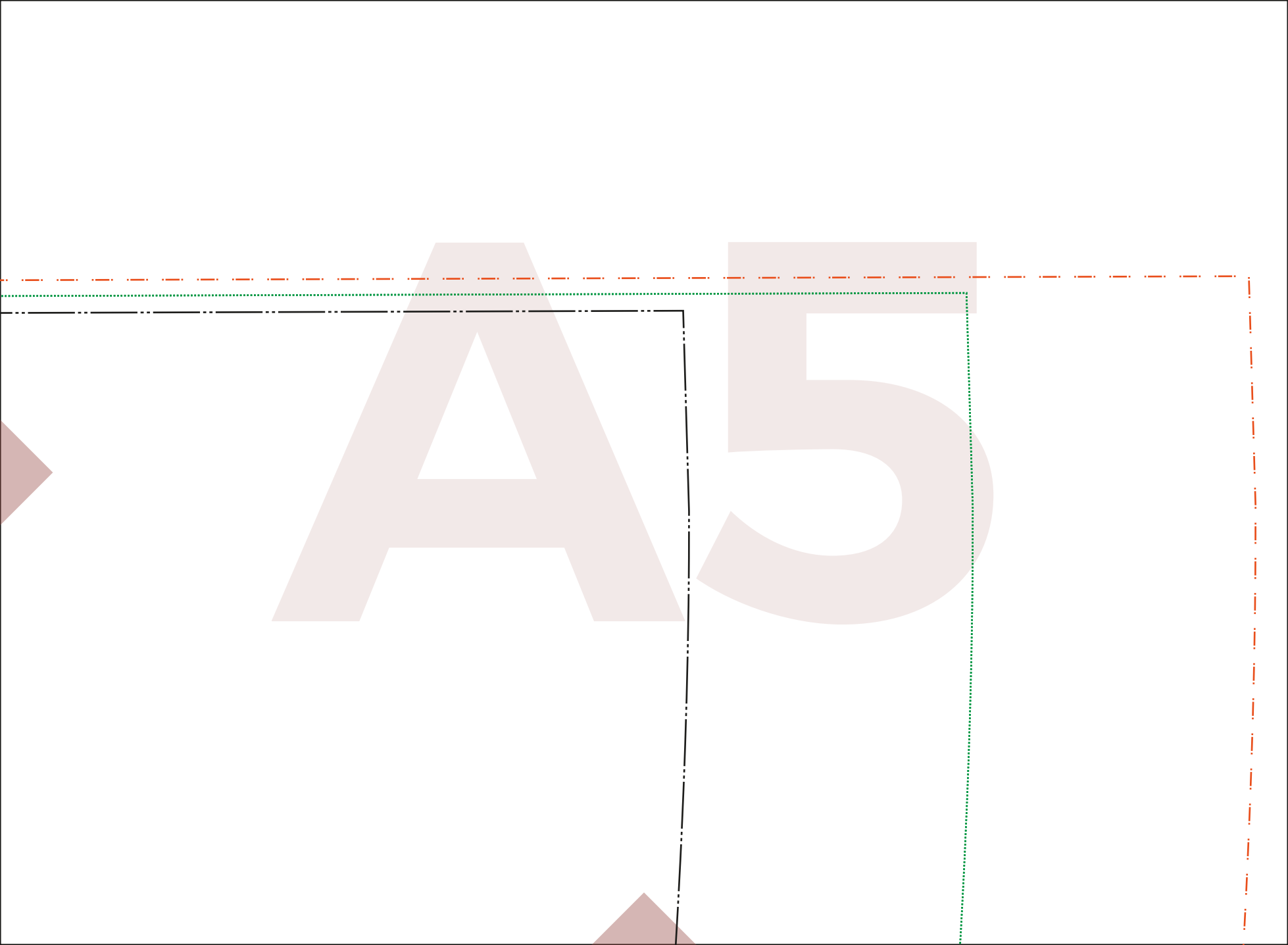


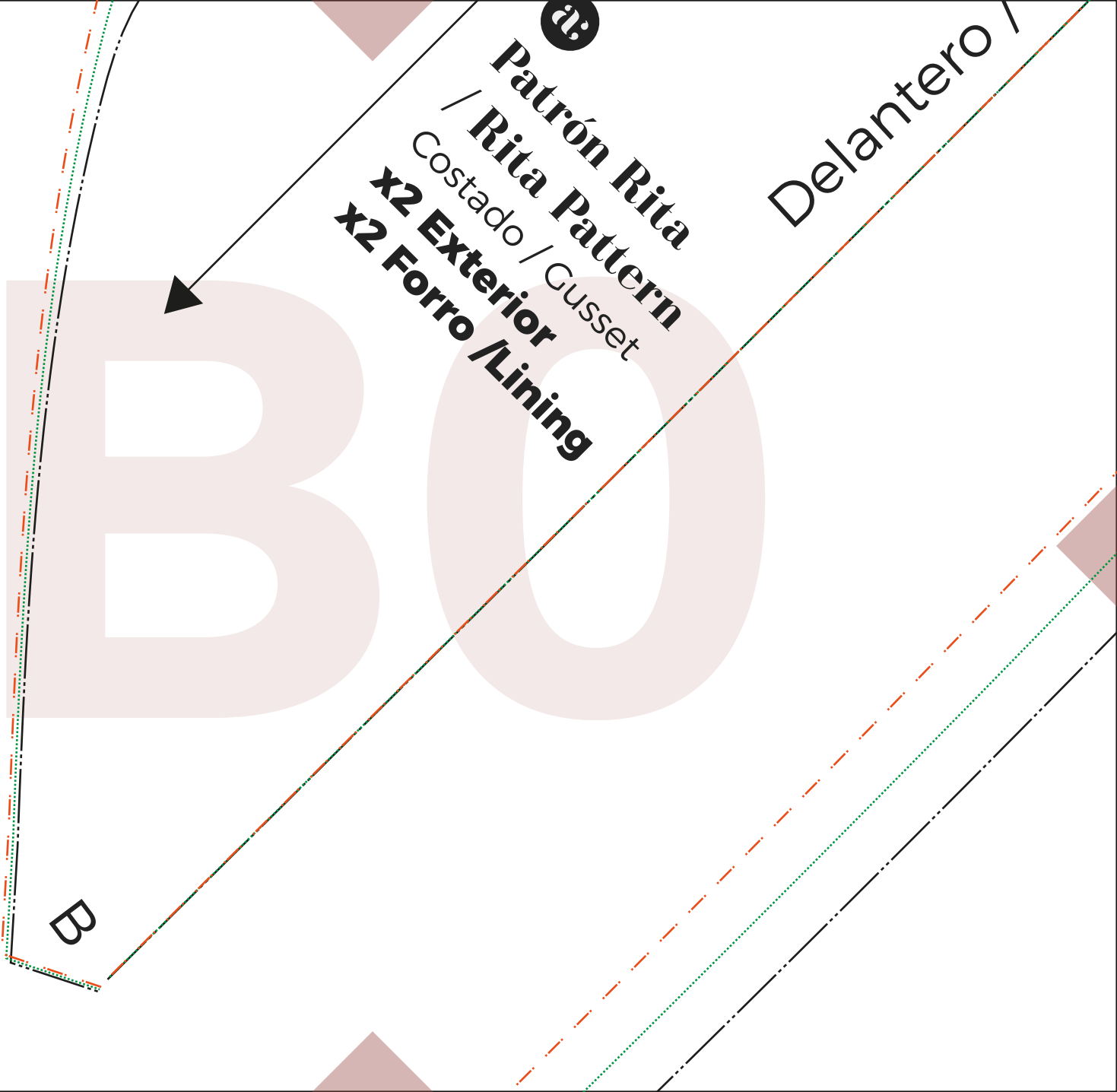
A3

Centre



o Espalda /Centre Back





a:

**Patrón Rita**  
**/ Rita Pattern**

*Costado / Gusset*

**x2 Exterior**  
**x2 Forro /Lining**

**Delantero /**

B

B1

Figure / Fold line



Linea plie

B2

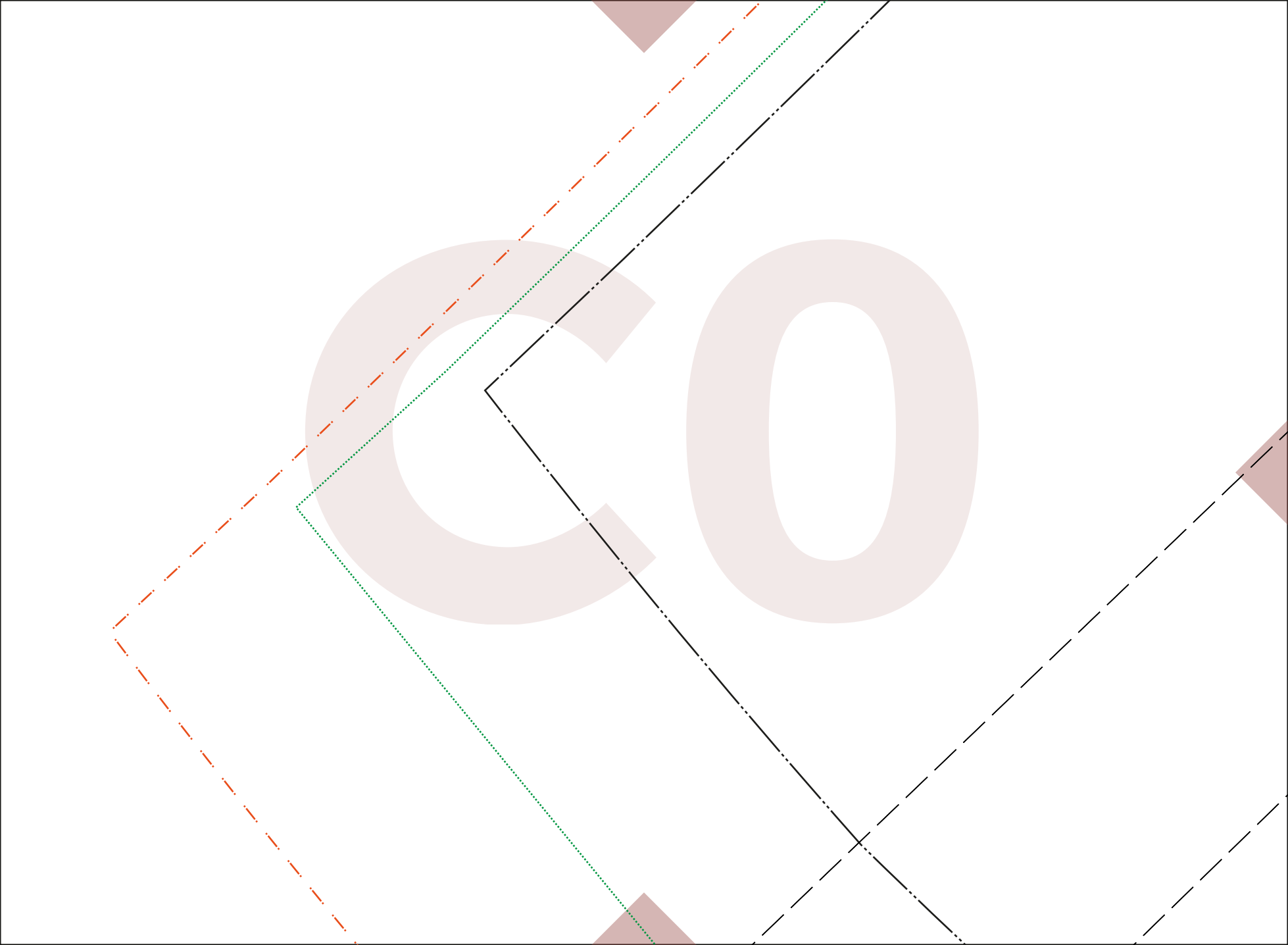
B3

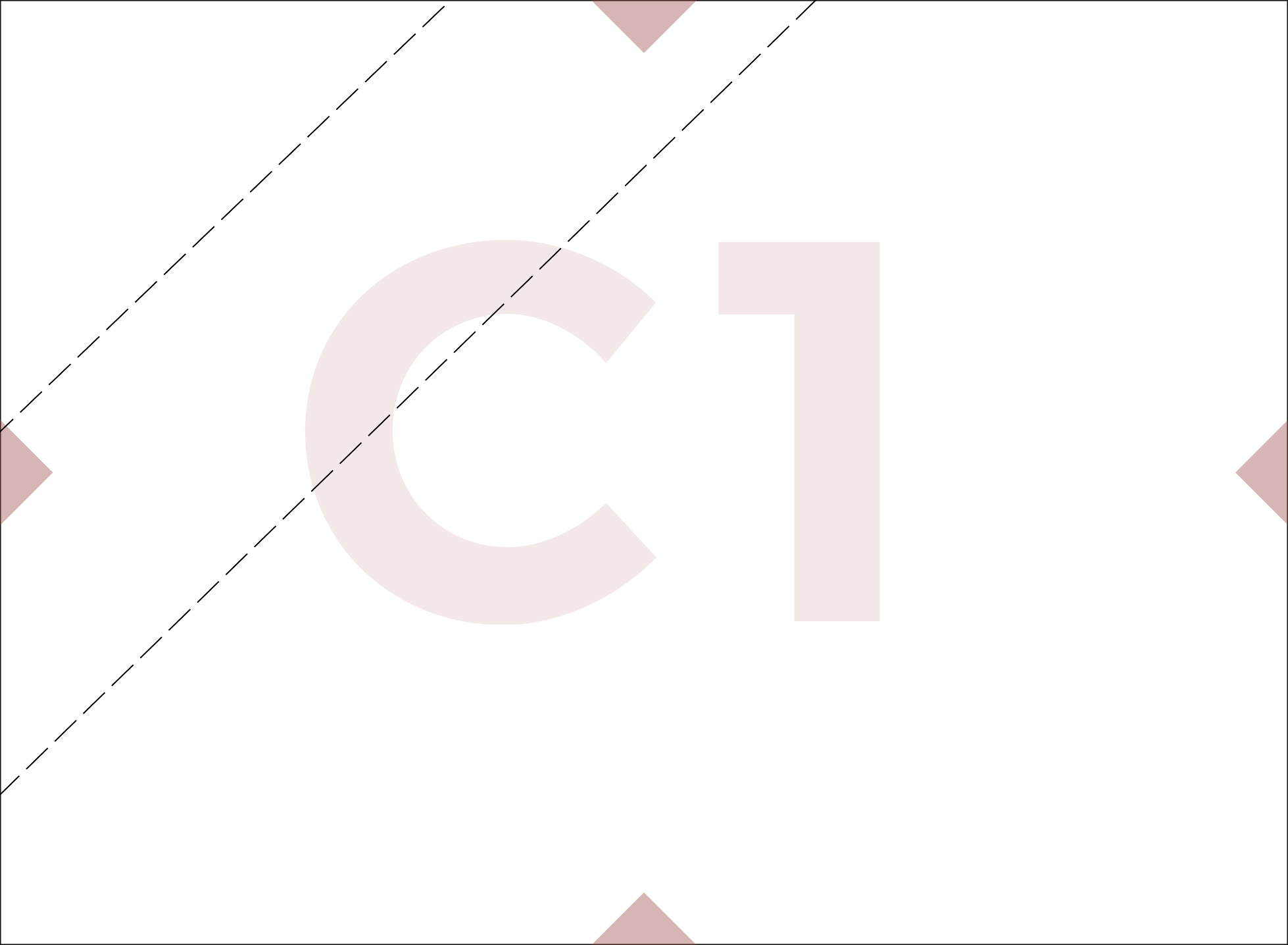


**Patrón Rita / Rita Pattern**

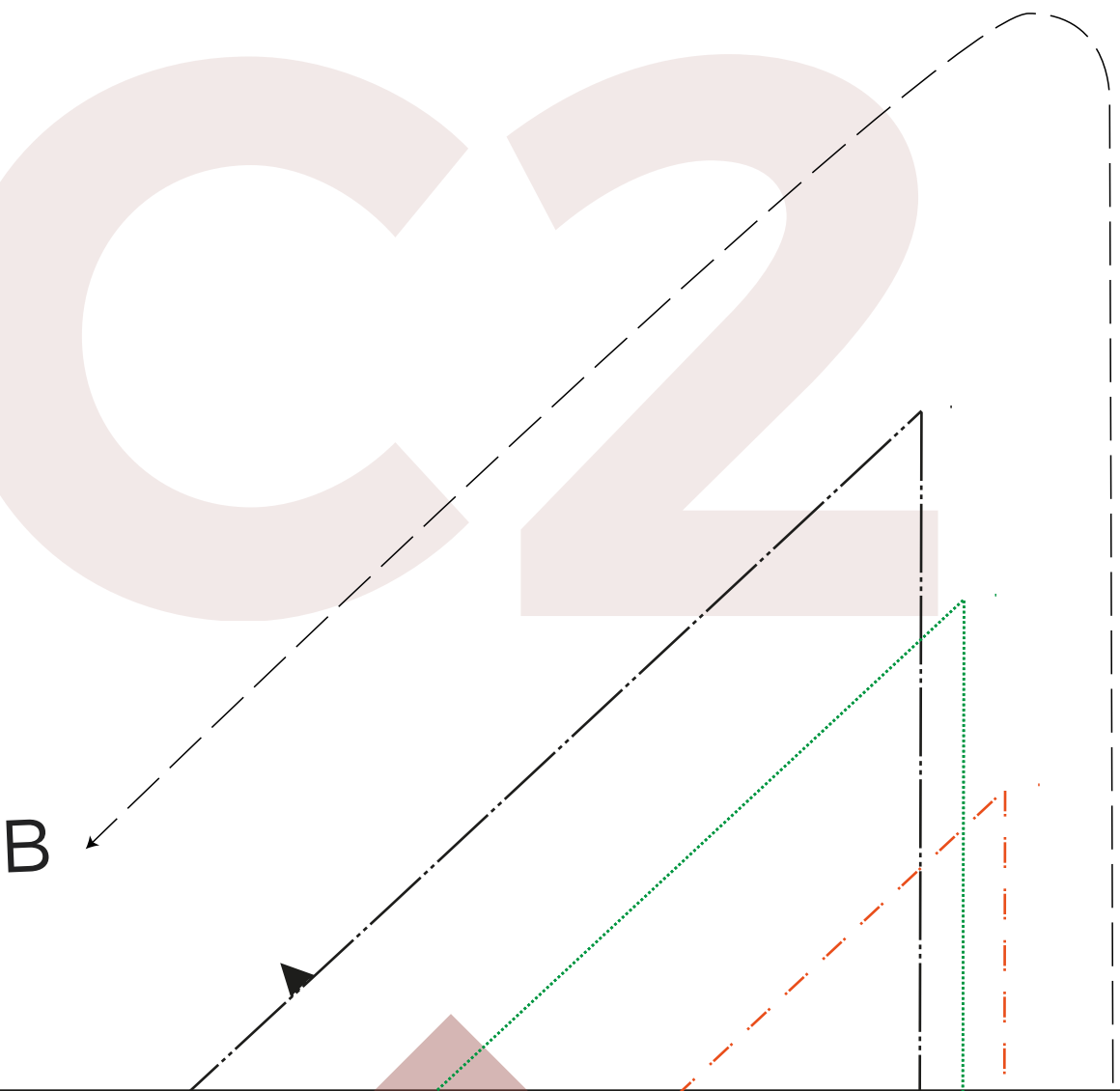
B4

B5





# Coser costado delantero /

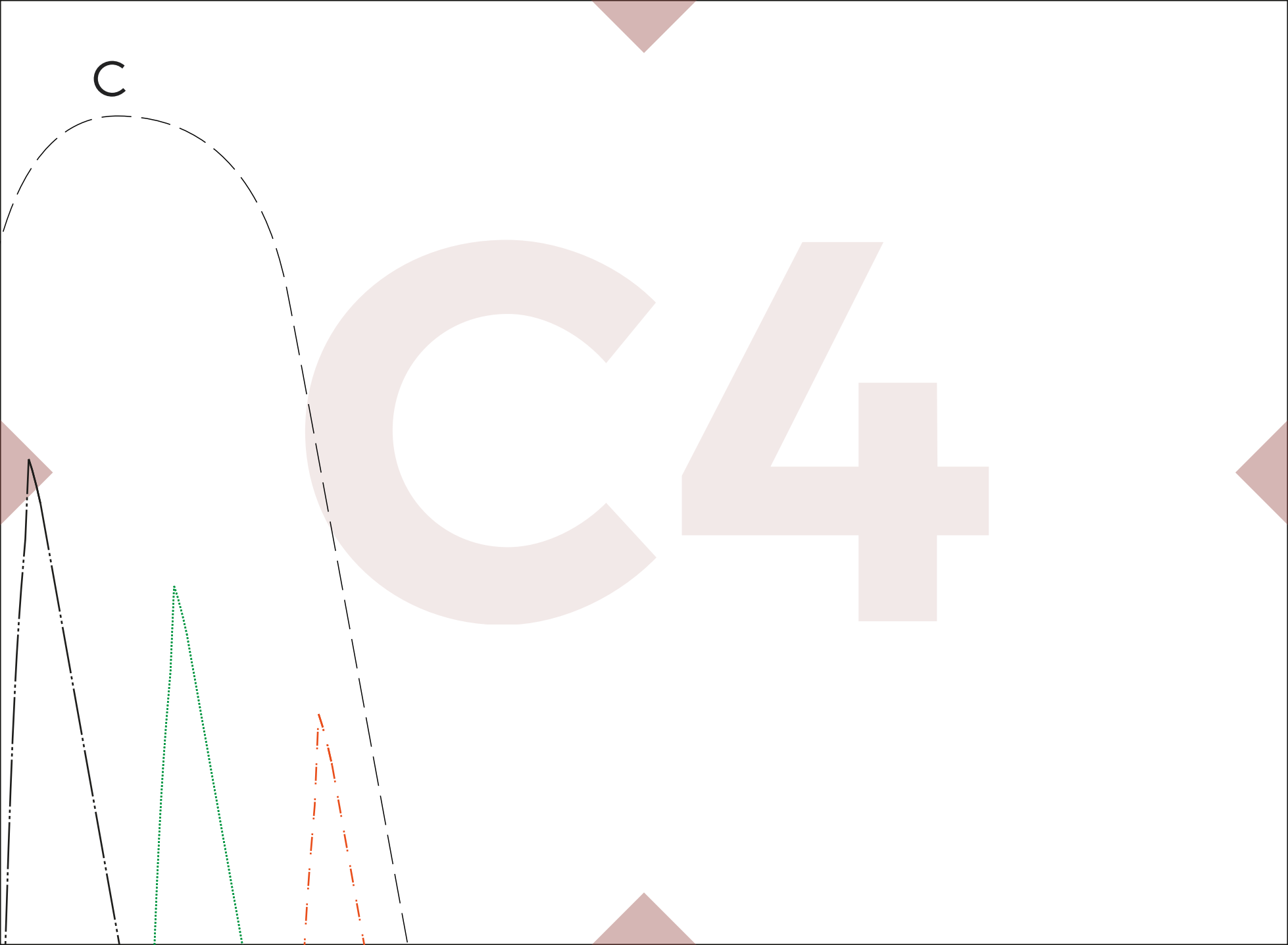


Cuerpo / Bodice  
**x2**

C3

Coser costado trasero / \$



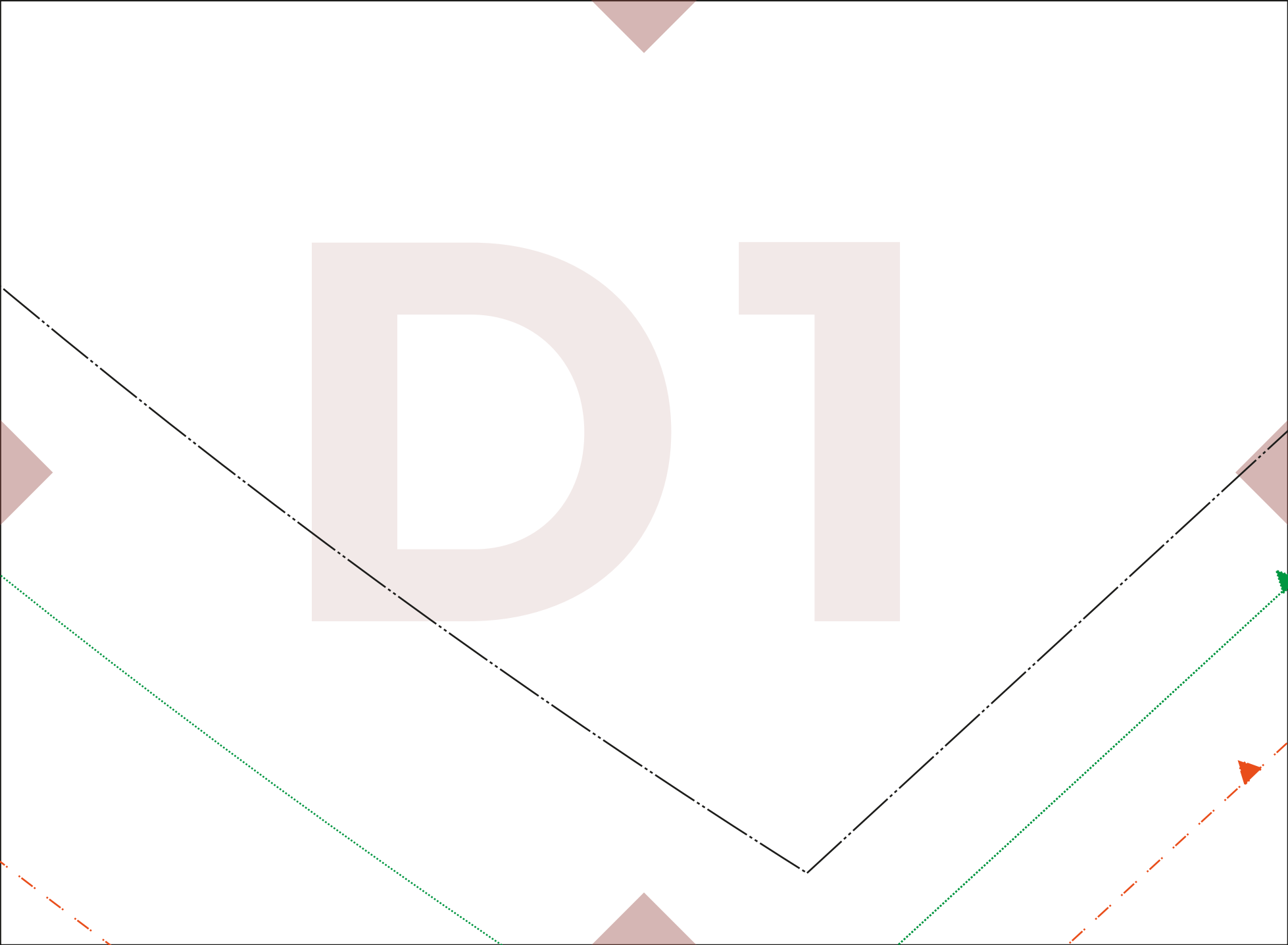


C

C5

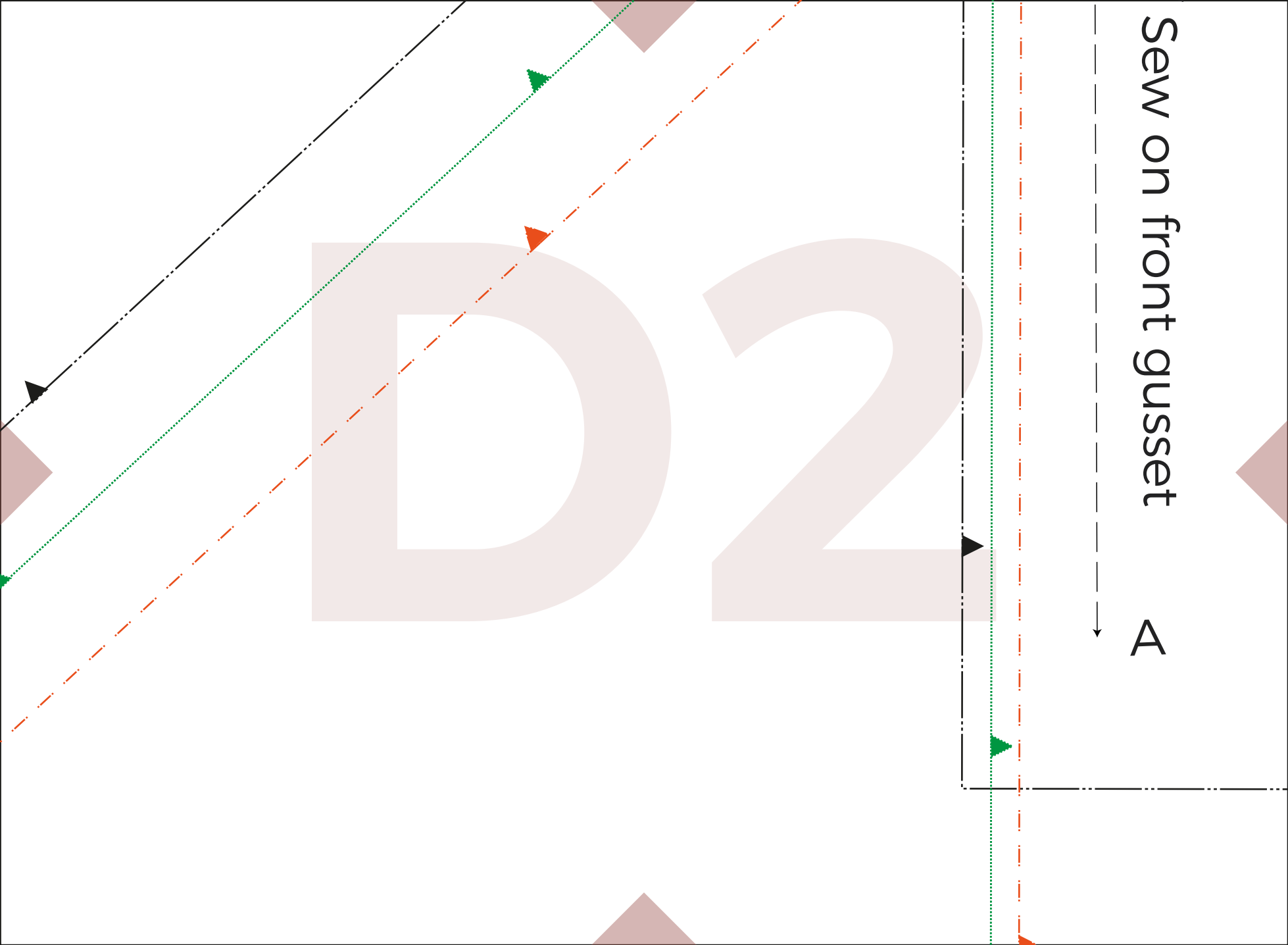
DO

DI



Sew on front gusset

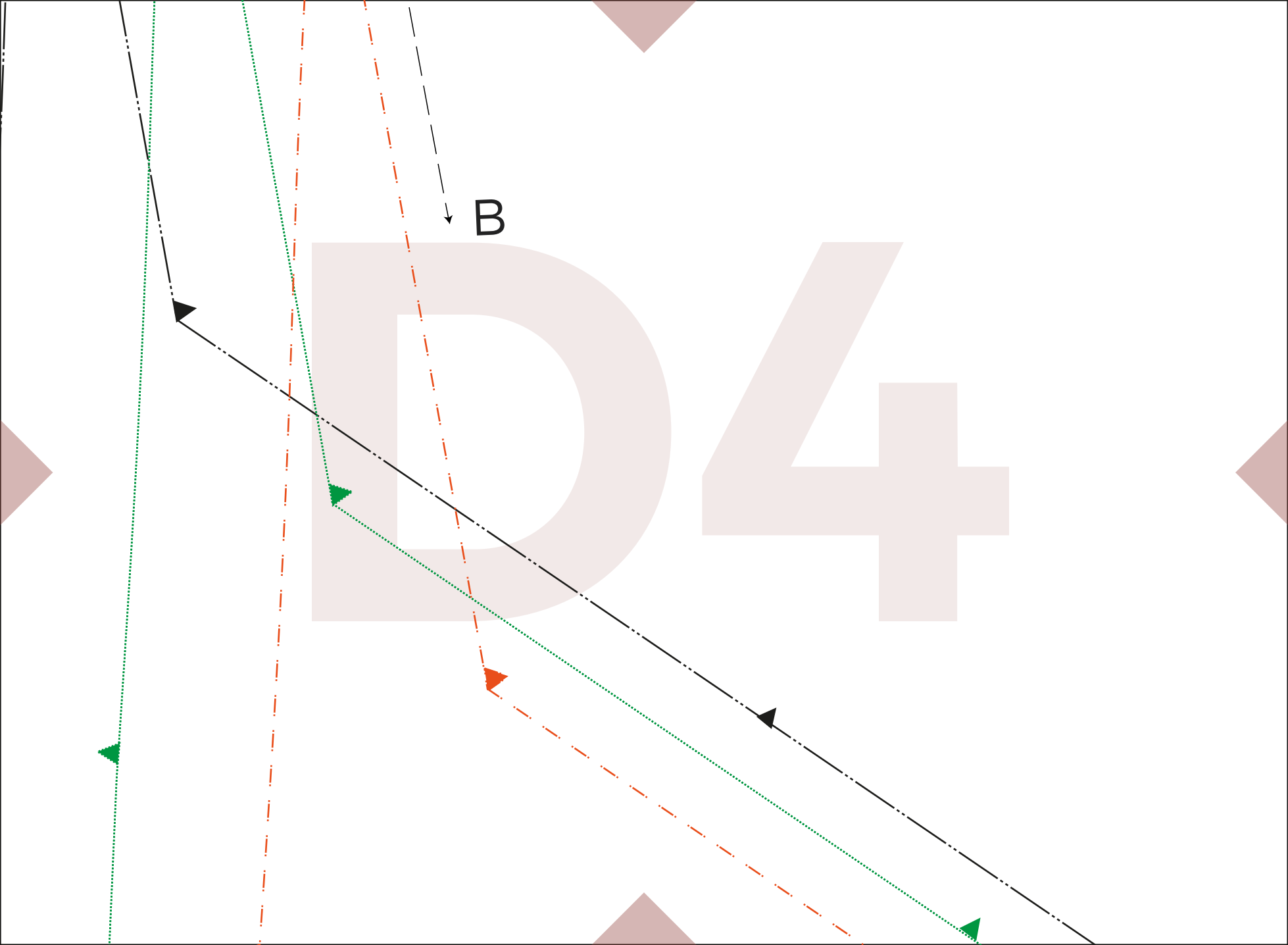
A



Sew on back gusset

A

D3



D5







The diagram shows a pattern piece for a garment, likely a skirt or a wide-leg pant, with a curved outer edge and a straight inner edge. The piece is outlined with a solid black line, a dashed orange line, and a dotted green line. A large, faint watermark '2' is visible in the background. A vertical arrow points from the label 'a' to the pattern piece. A horizontal arrow points from the text 'Al lomo /on fold' to the right edge of the pattern piece.

**a:**

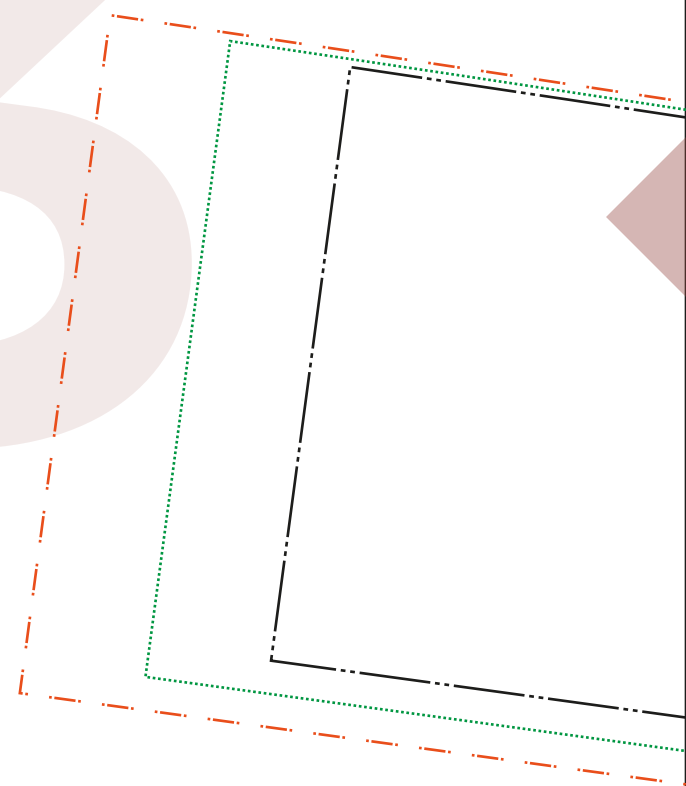
**Patrón Rita**  
**/ Rita Pattern**

Vista/ Facing

**x1**

Al lomo  
/on fold

E3





The diagram shows a neckline pattern piece with various construction lines. A solid black line represents the main pattern edge, which is curved at the top and bottom. A dashed red line follows the solid line closely. A dotted green line is also present, slightly offset from the others. A vertical arrow on the left points downwards, indicating the direction of the pattern. A horizontal arrow on the right points to the right, indicating the direction of the pattern. The background is white with faint, large, light brown geometric shapes.

**a:**

# Patrón Rita / Rita Pattern

Cuello / Neckline

**x2**

Al lomo  
/on fold

