

Talla / Size

34

36

38

40

42

44

46

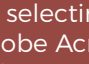
48

50

52

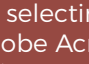
NO IMPRIMAS TODAS LAS TALLAS

Es mucho más fácil si solo imprimes tu talla.

Es tan fácil como seleccionar este icono  en Adobe Acrobat antes de imprimir y ocultar las capas que no necesitas.

DONT PRINT ALL SIZES!

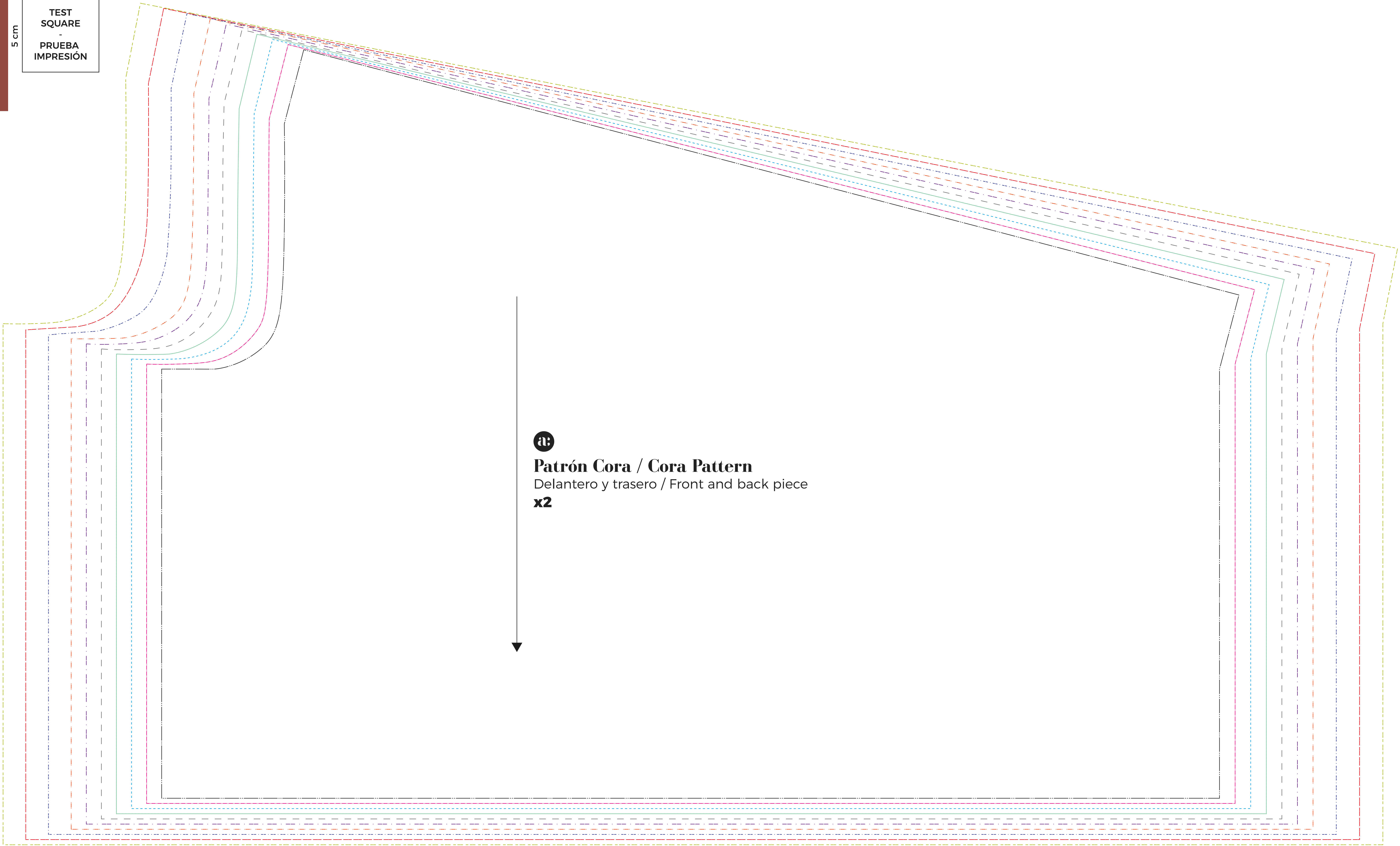
It is much easier if you print only the size or sizes you are interested in.

It's as easy as selecting this icon  in Adobe Acrobat before printing and hide the layers of the sizes you don't need.

5 cm

5 cm

TEST SQUARE - PRUEBA IMPRESIÓN



Patrón Cora / Cora Pattern
Delantero y trasero / Front and back piece
x2