




Patrón Andi / Andi Pattern

Por / By Andrea Condés

Talla / Size	
—————	34
—————	36
—————	38
—————	40
—————	42
—————	44
—————	46
—————	48
—————	50
—————	52


NO IMPRIMAS TODAS LAS TALLAS

Es mucho más fácil si solo imprimes tu talla.

Es tan fácil como seleccionar este icono  en Adobe Acrobat antes de imprimir y ocultar las capas que no necesites.

DON'T PRINT ALL SIZES!

It is much easier if you print only the size or sizes you are interested in.

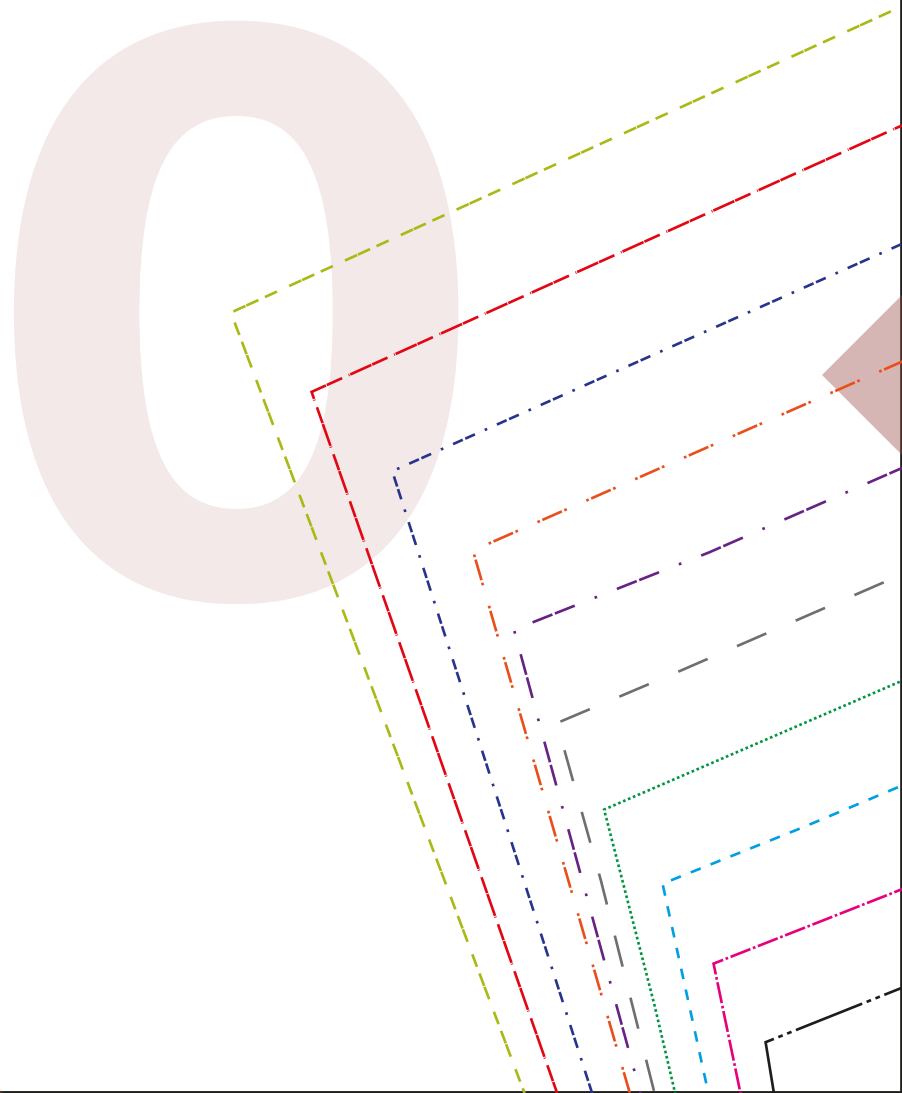
It's as easy as selecting this icon  in Adobe Acrobat before printing and hide the layers of the sizes you don't need.

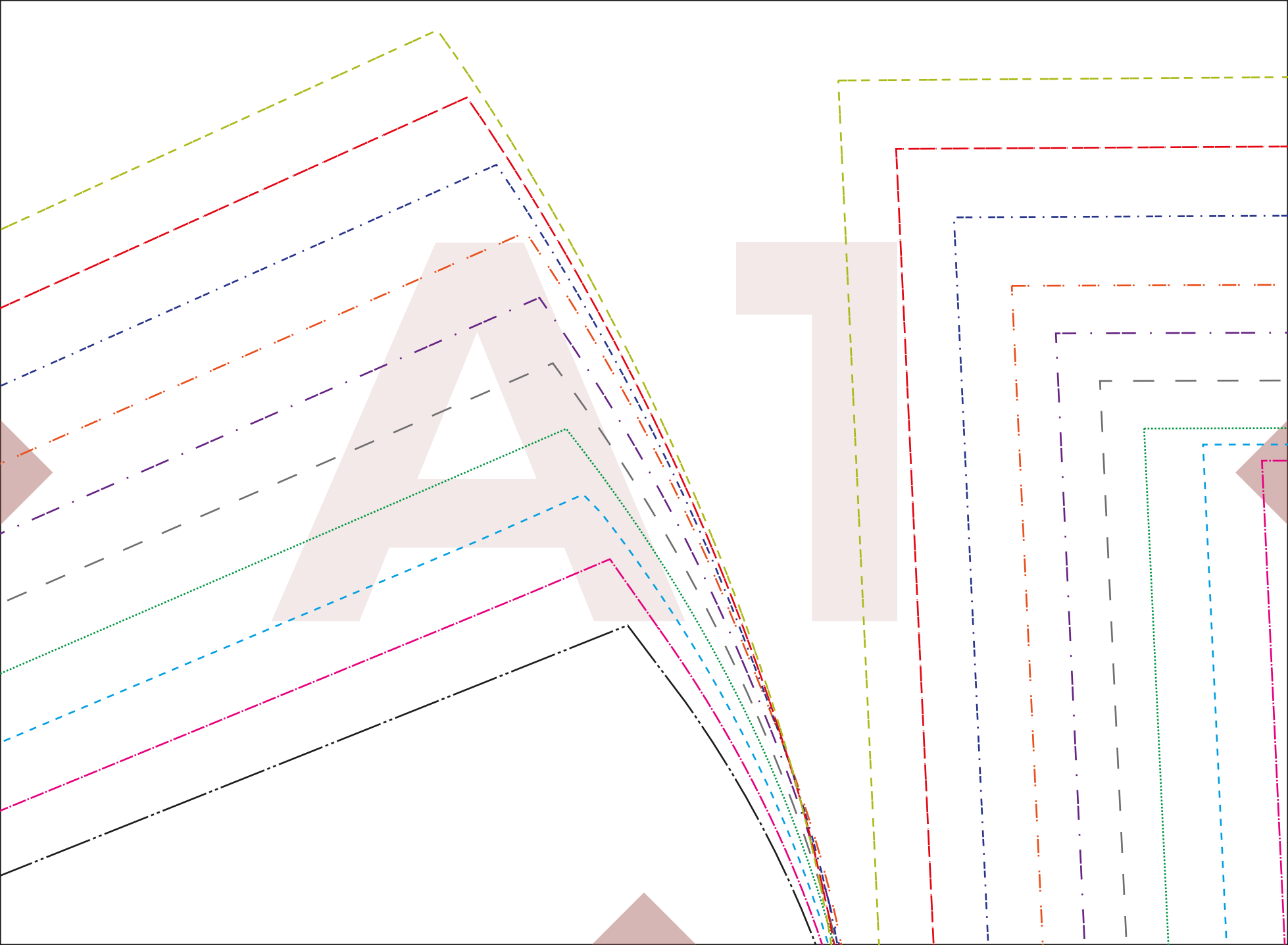
5 cm

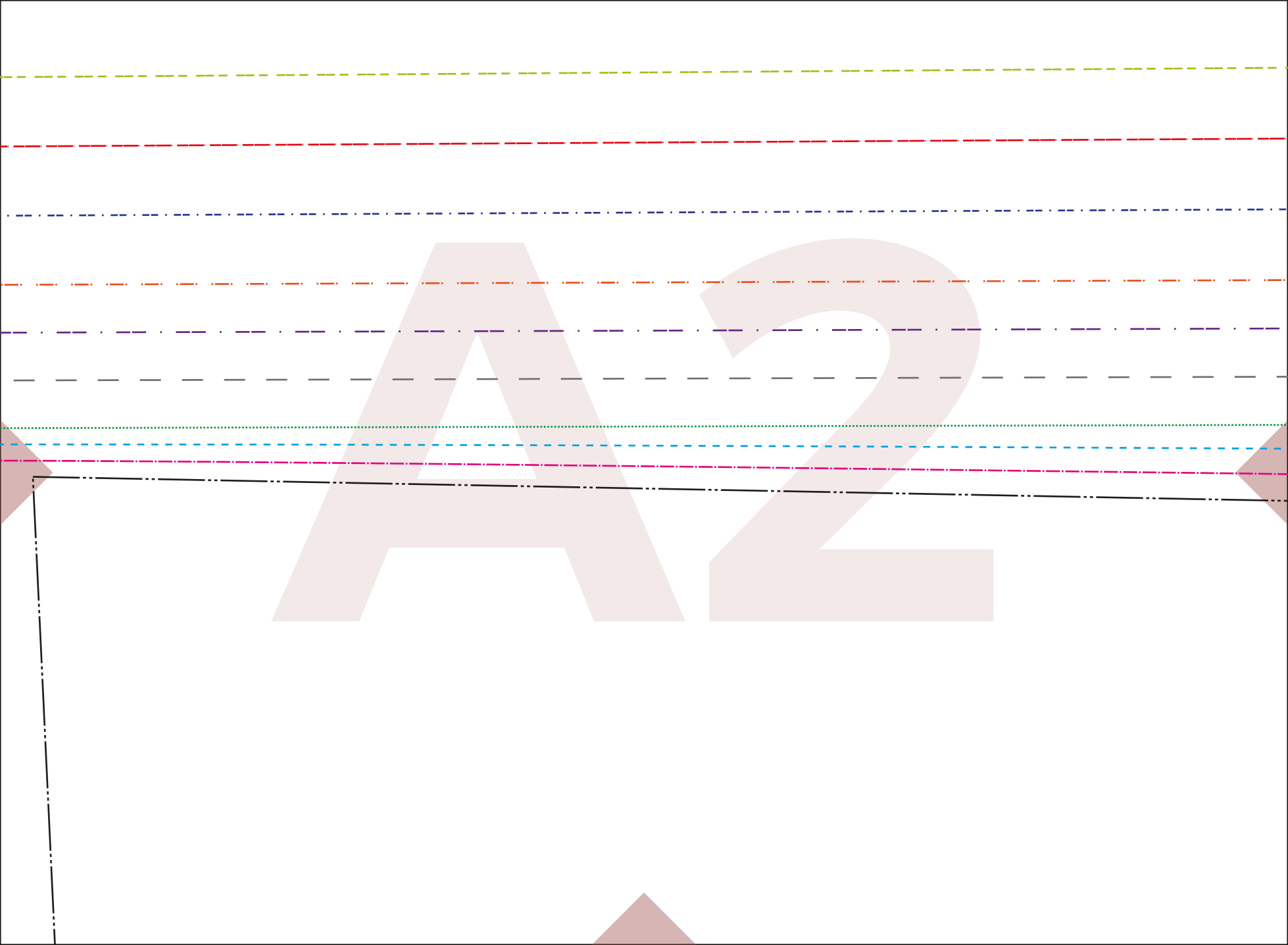
TEST
SQUARE

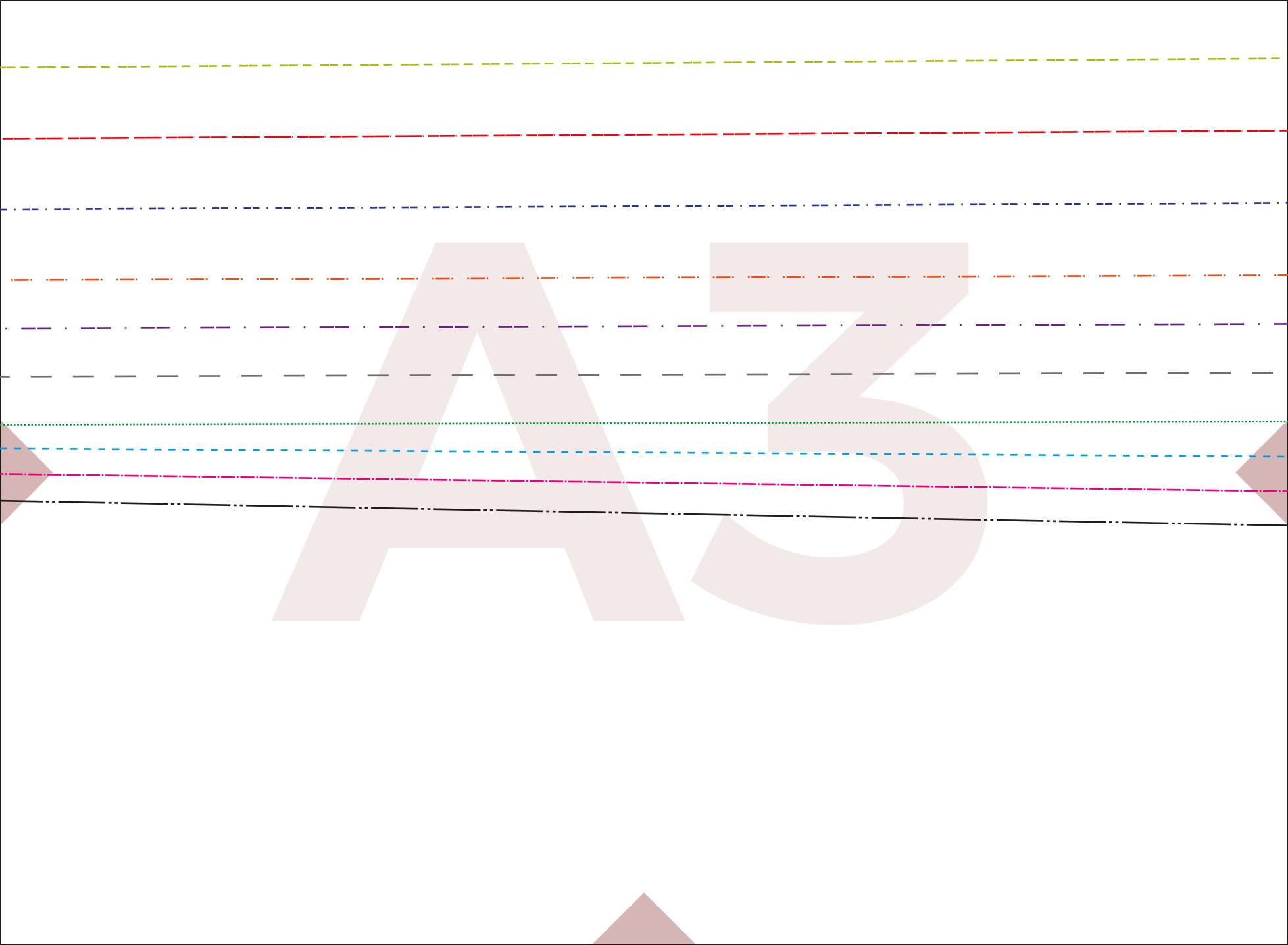
PRUEBA
IMPRESIÓN

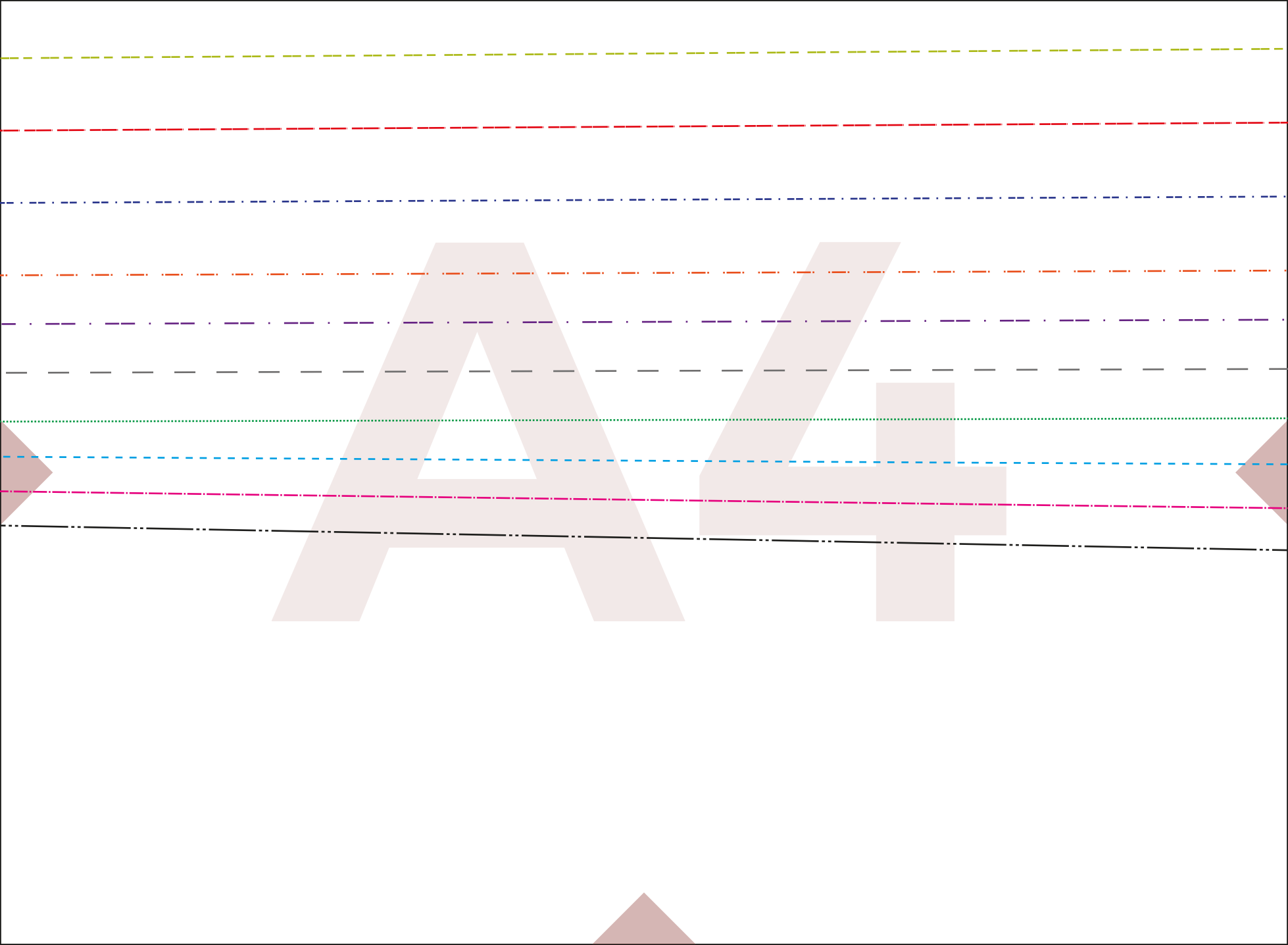
5 cm

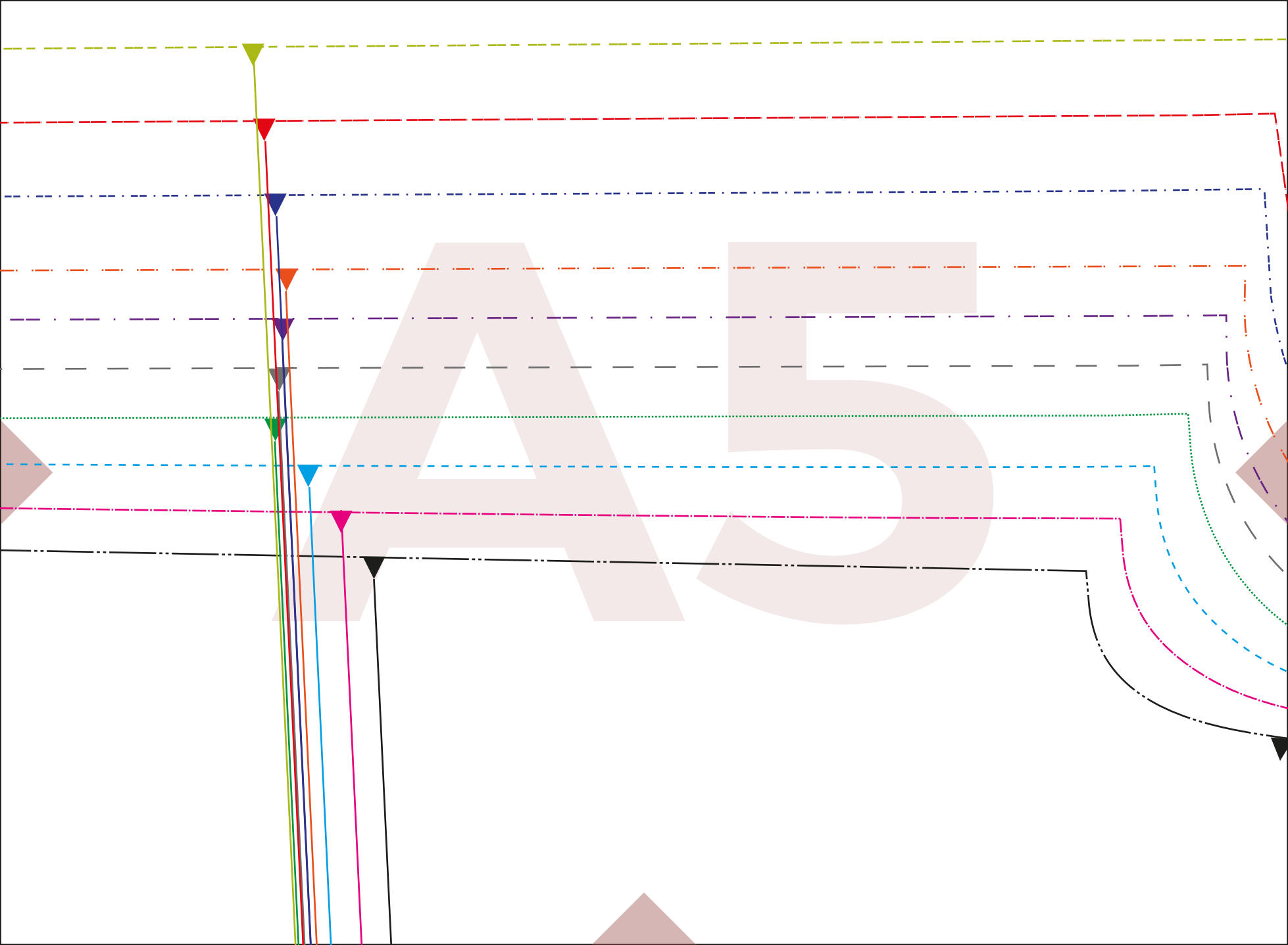


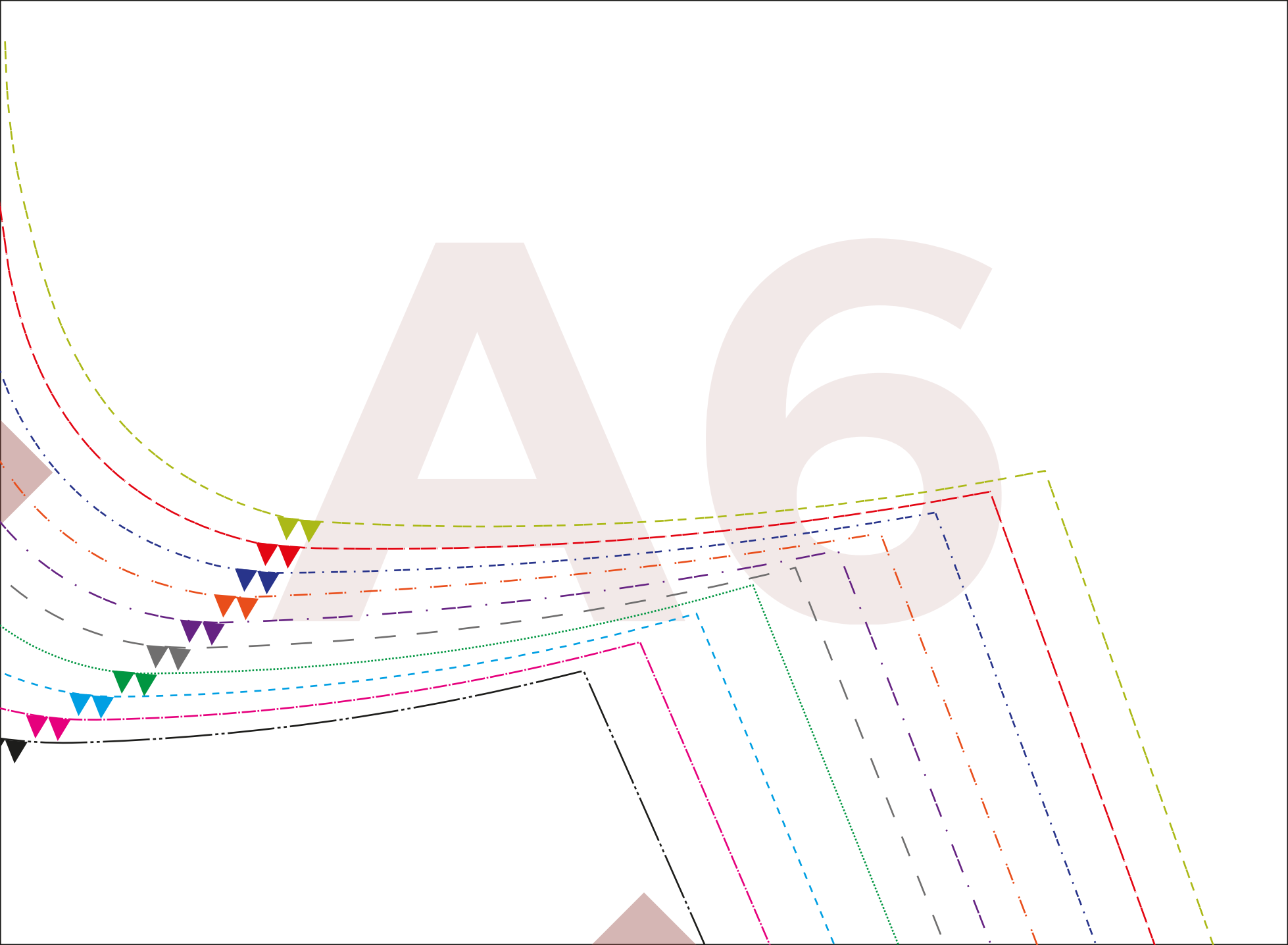




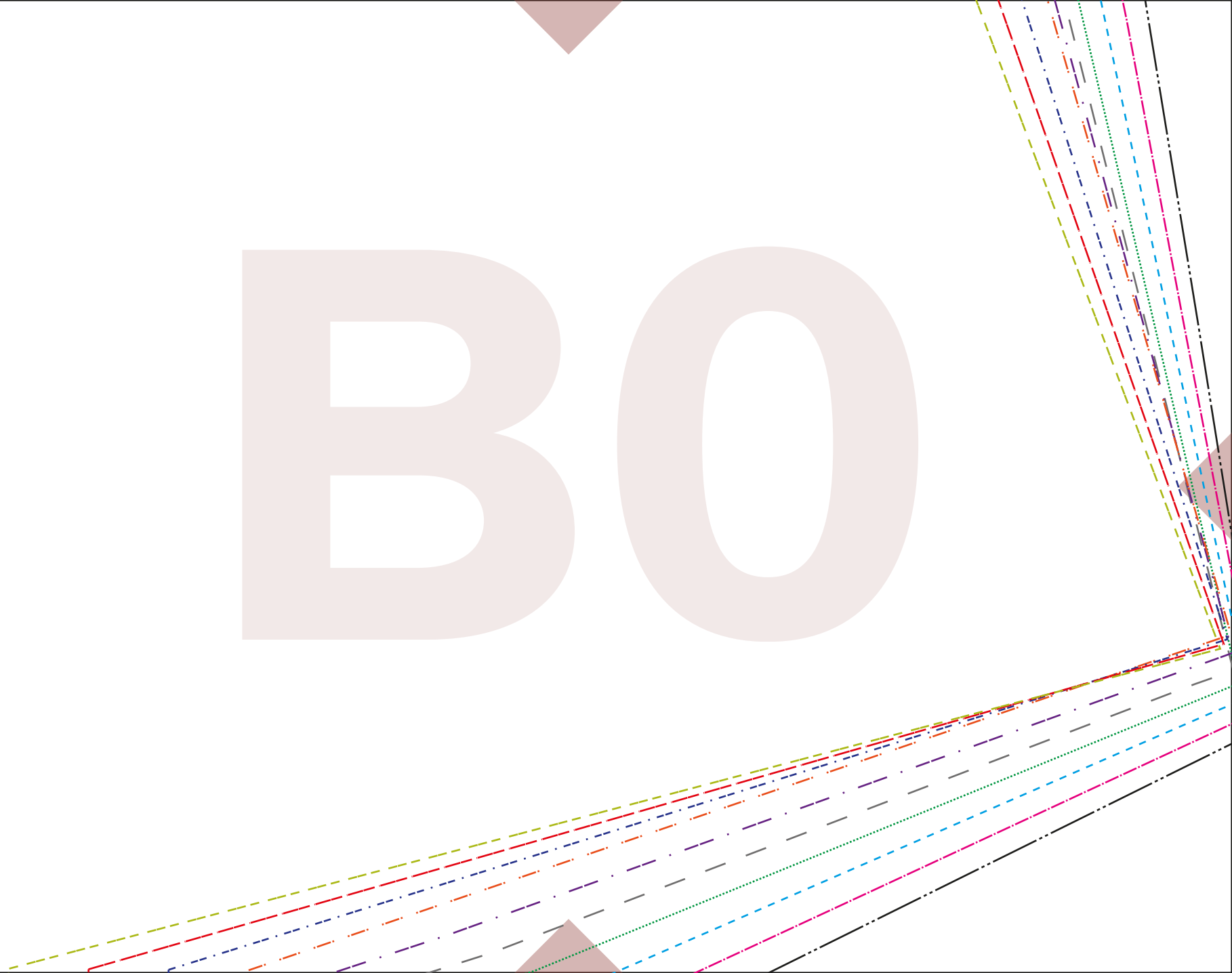




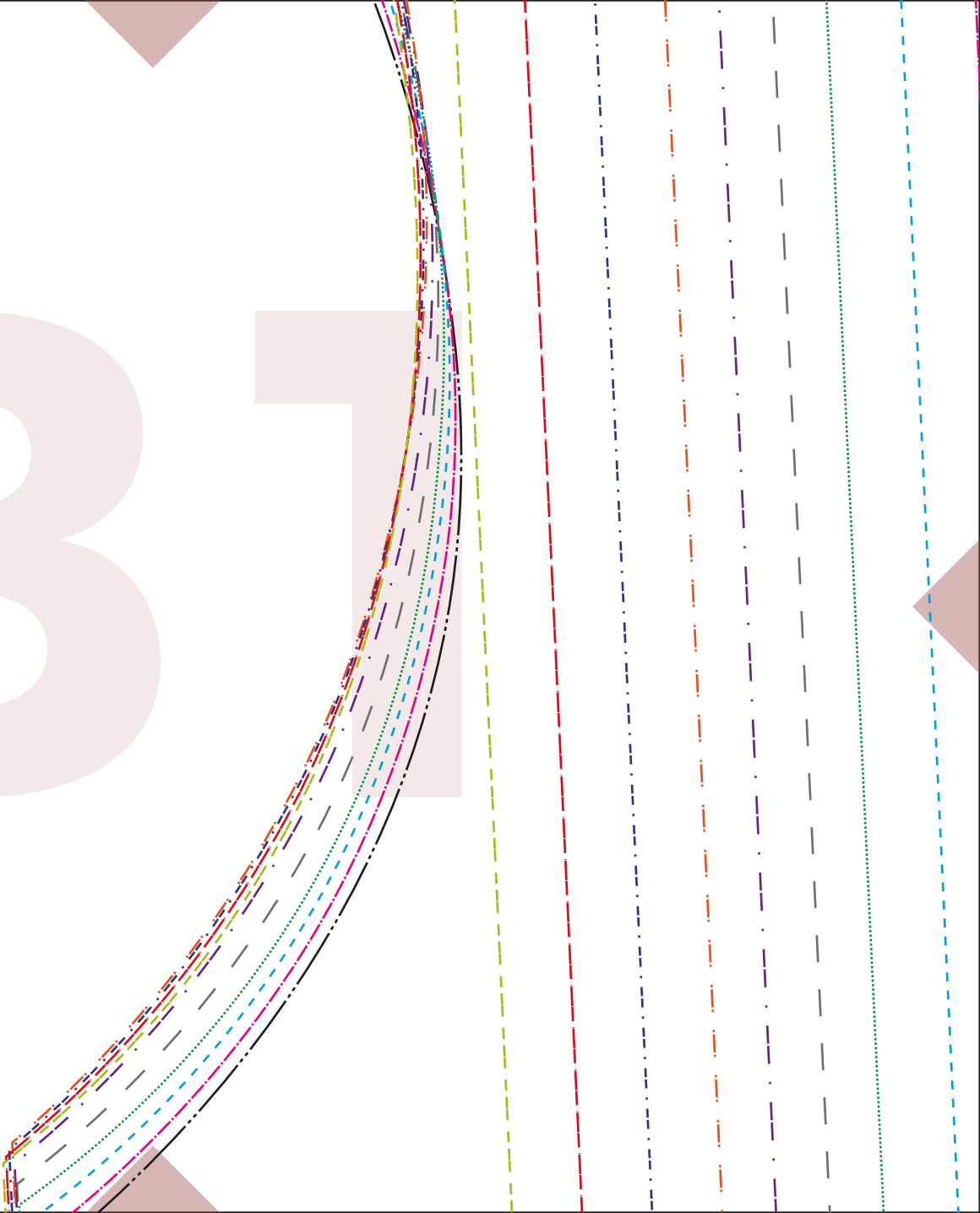




BO



B1



B2

B3

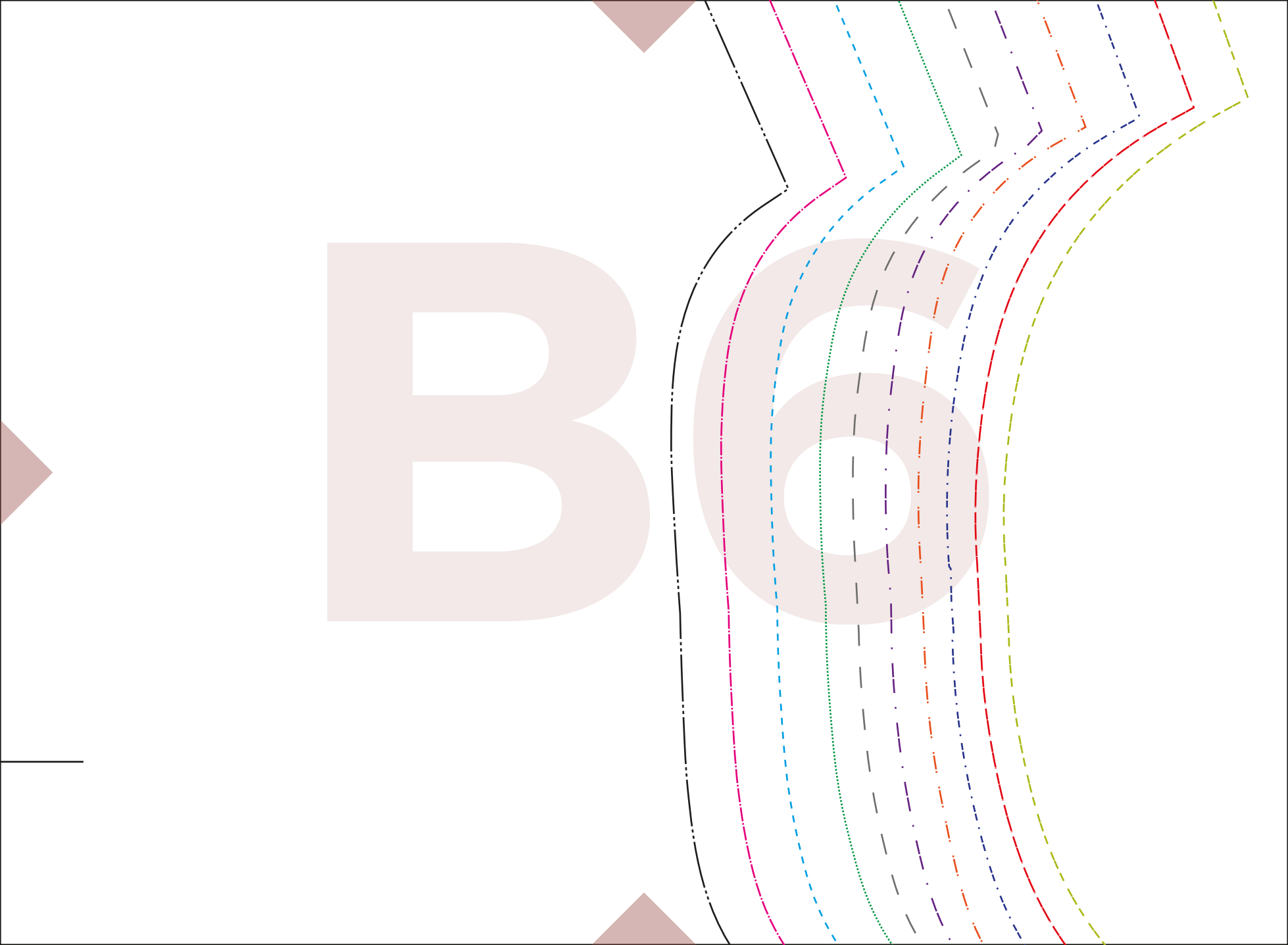
B4



Patrón
Trasero/
x1



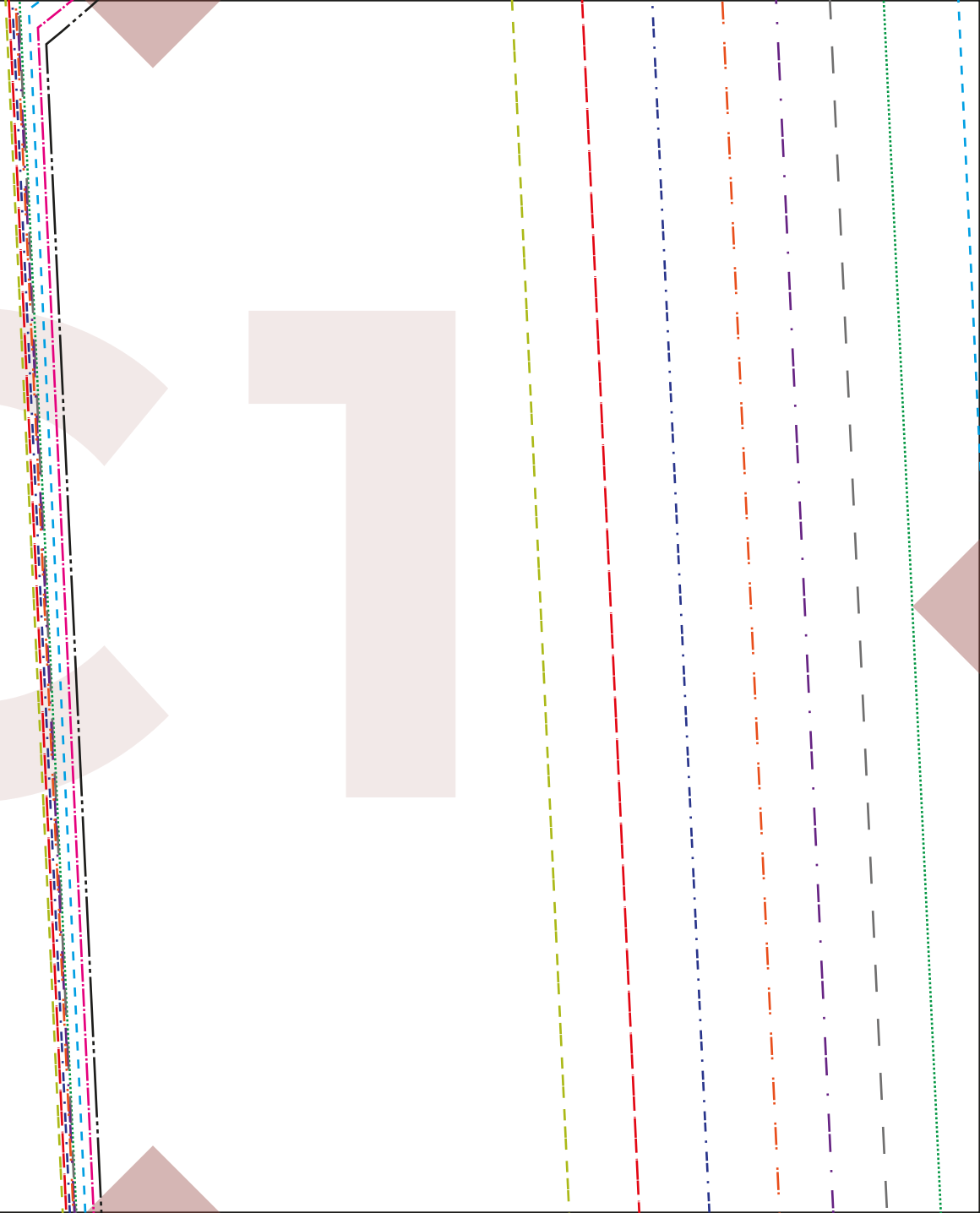
B5



CO



C1



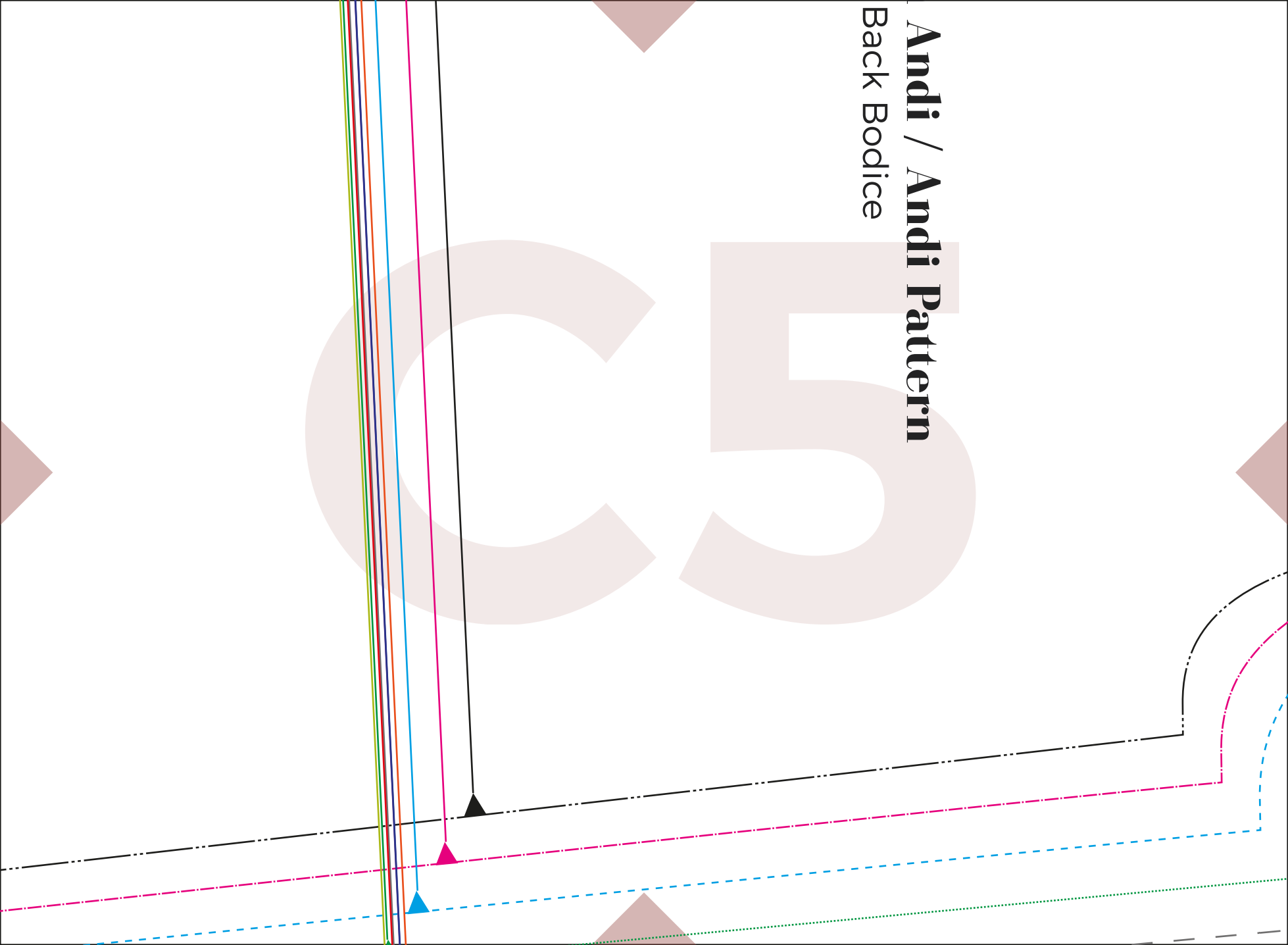
C2

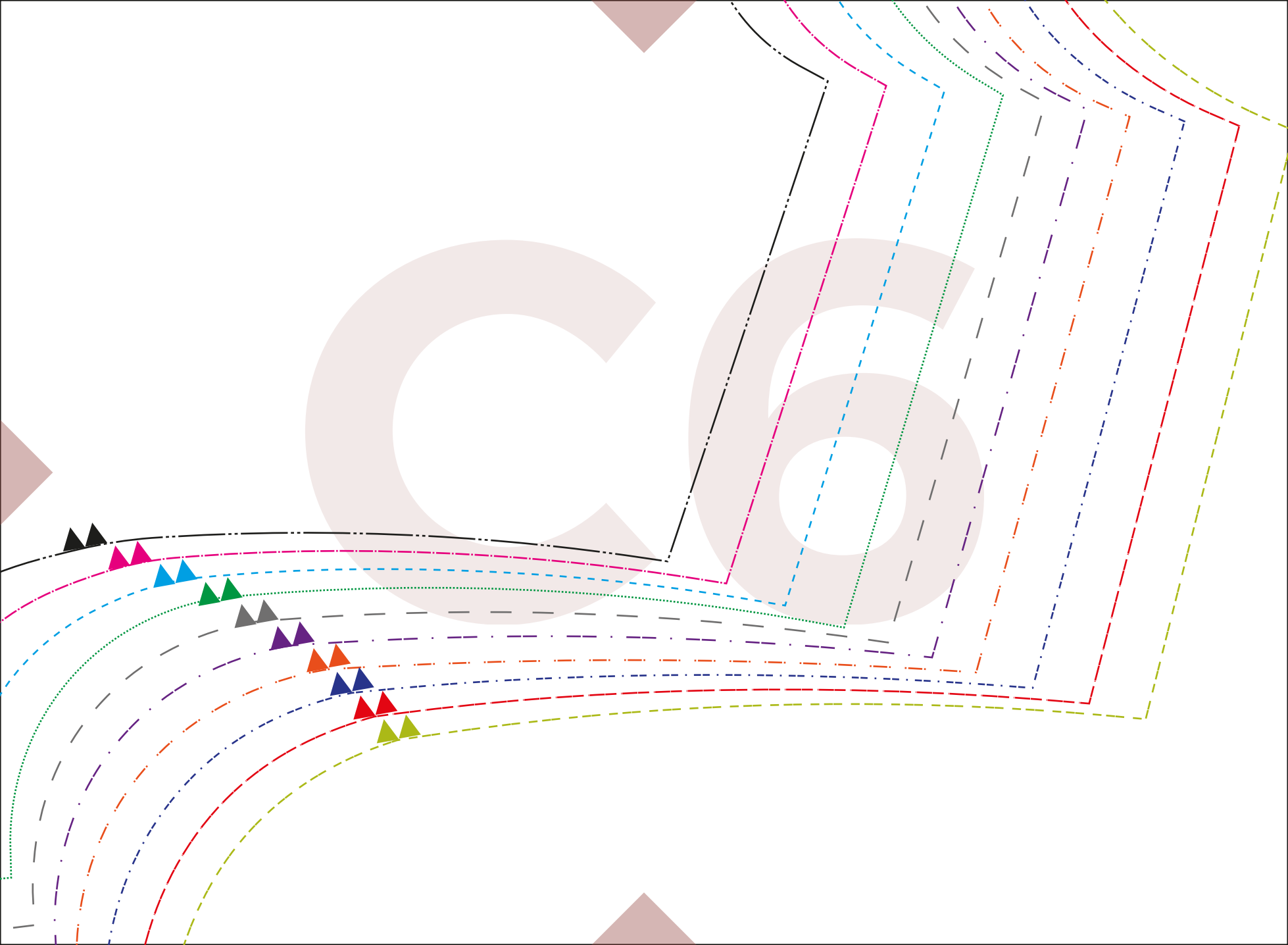
C3

C4

Andi / Andi Pattern

Back Bodice





DO

a:

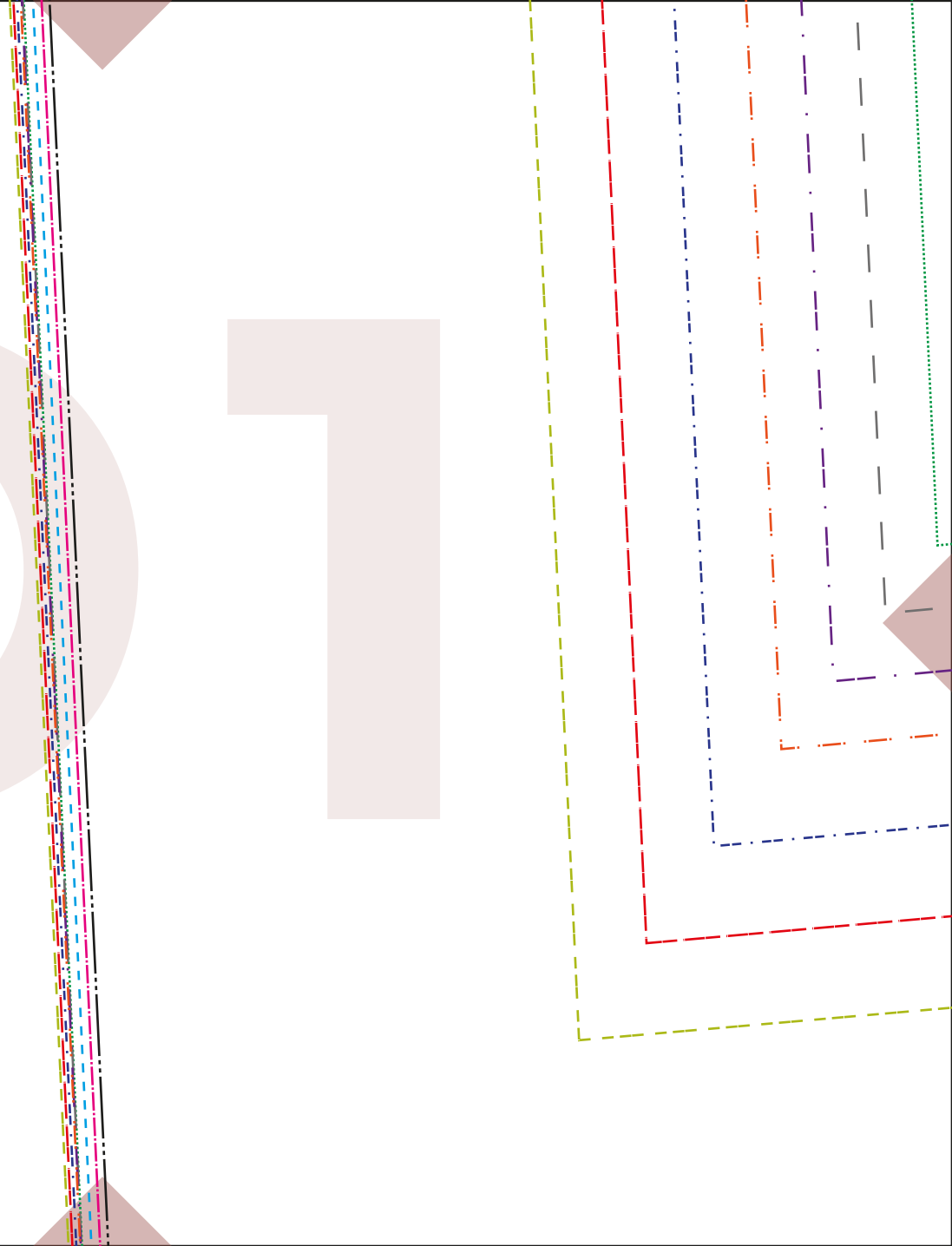
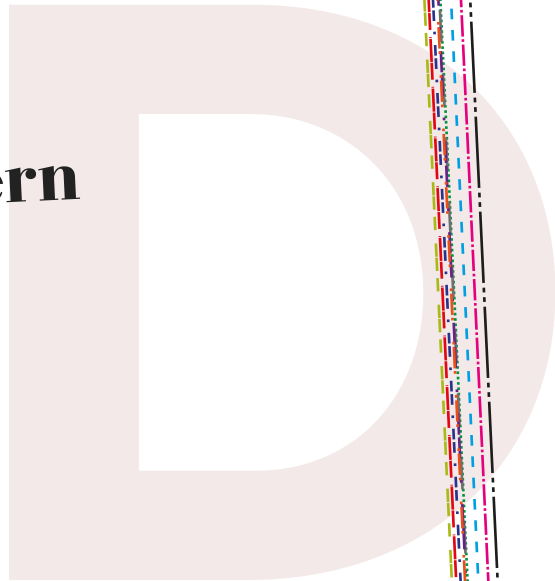
Patrón An

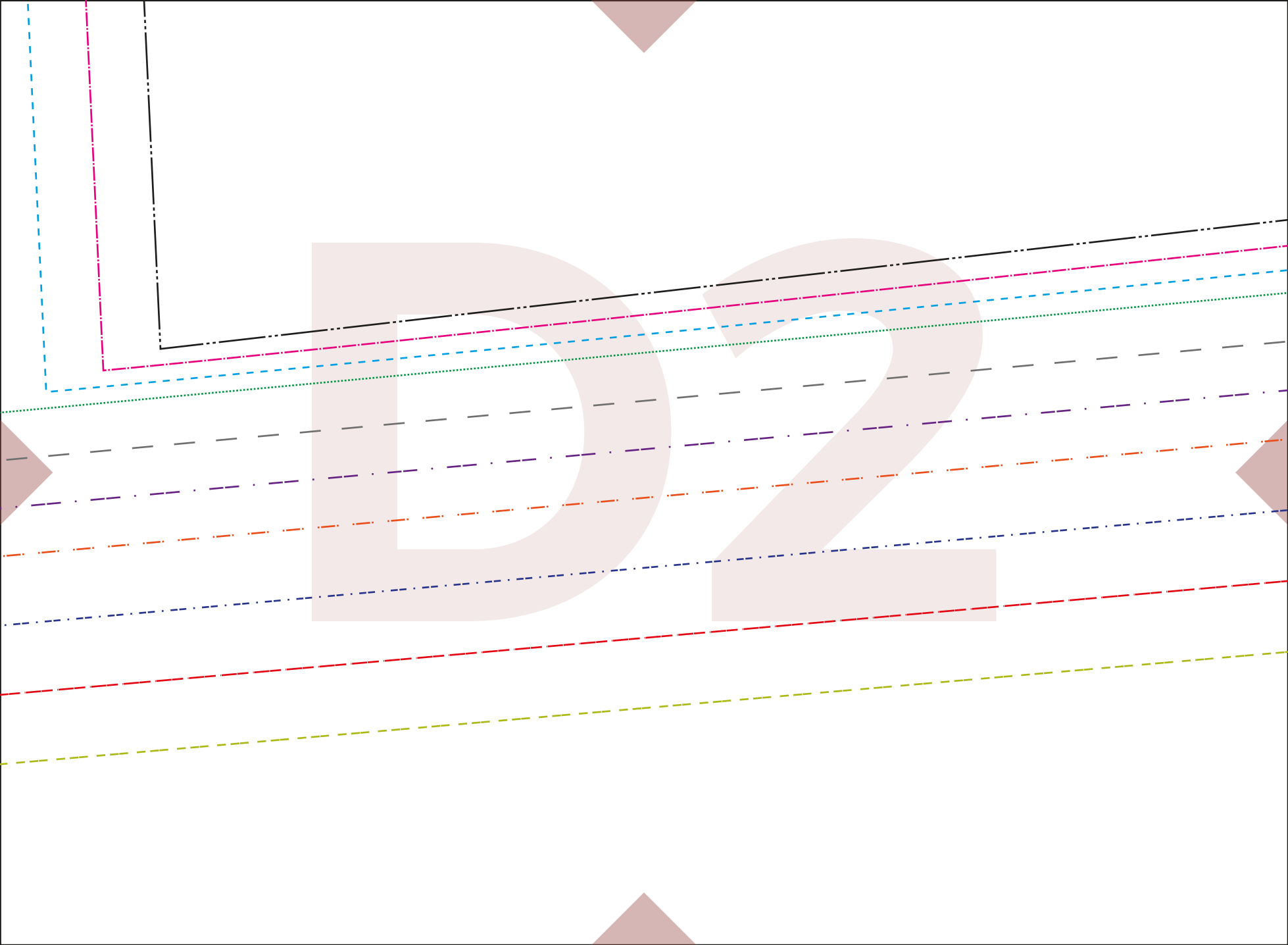
Delantero 2/

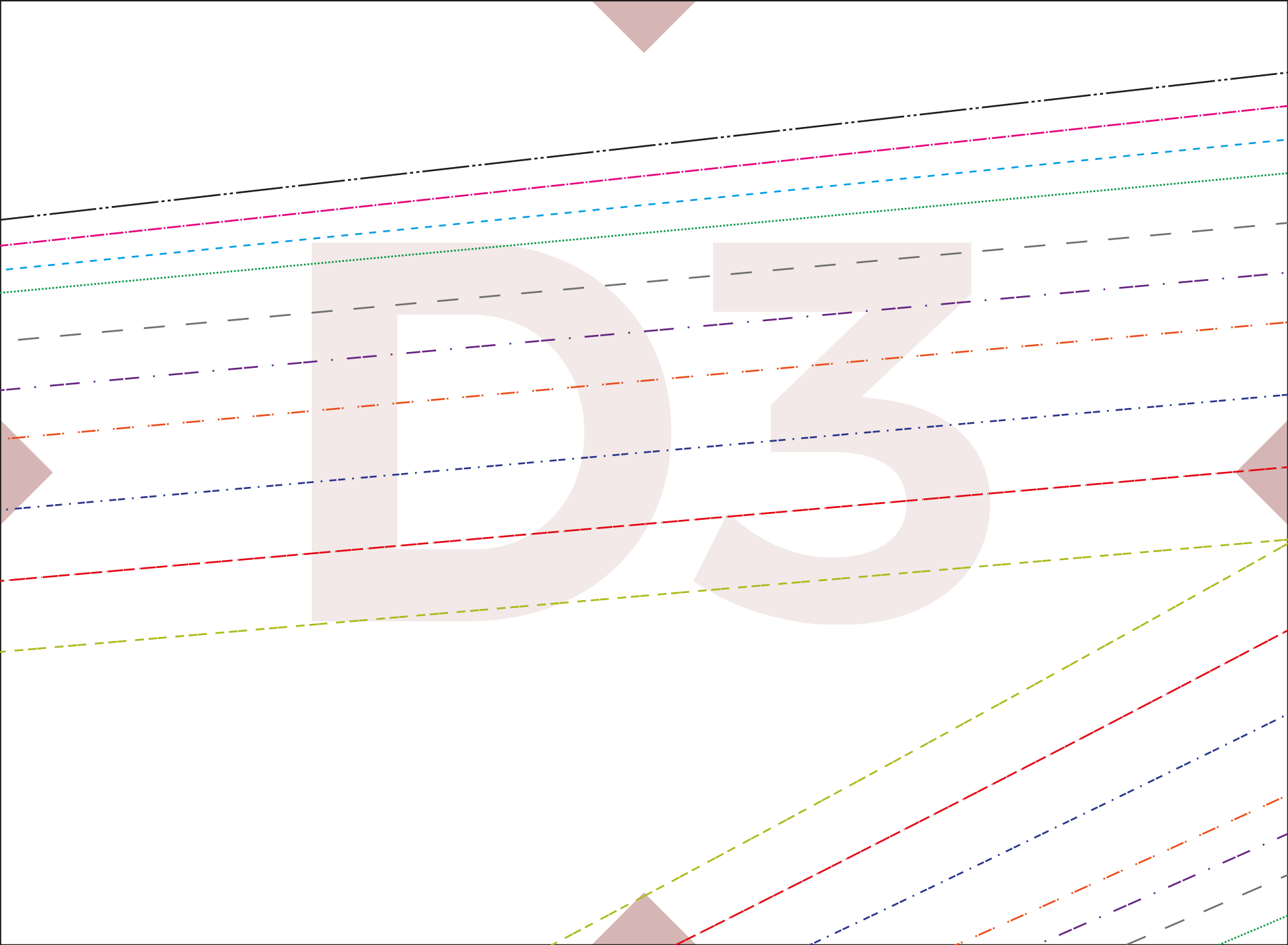
x1

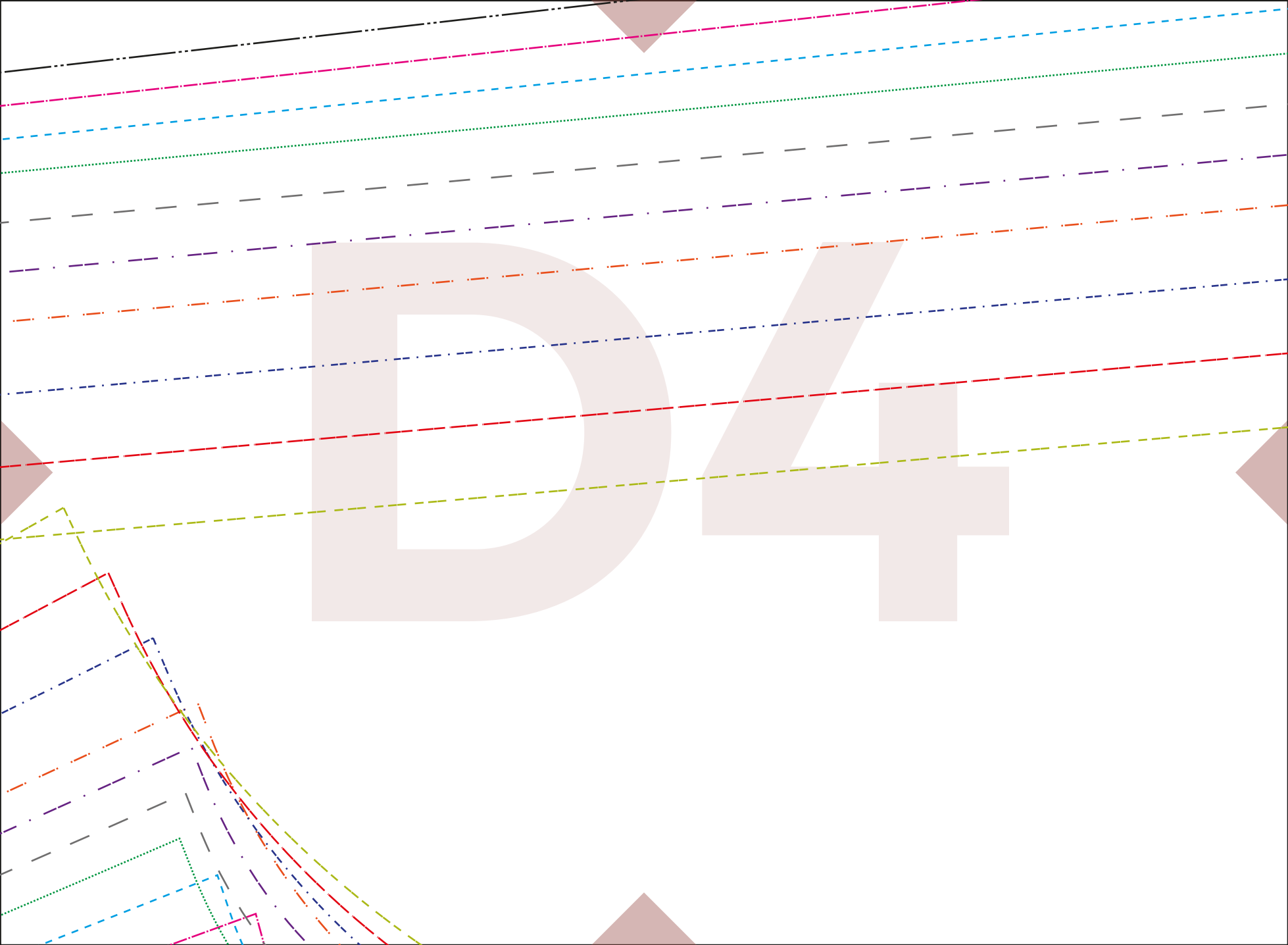
di / Andi Pattern

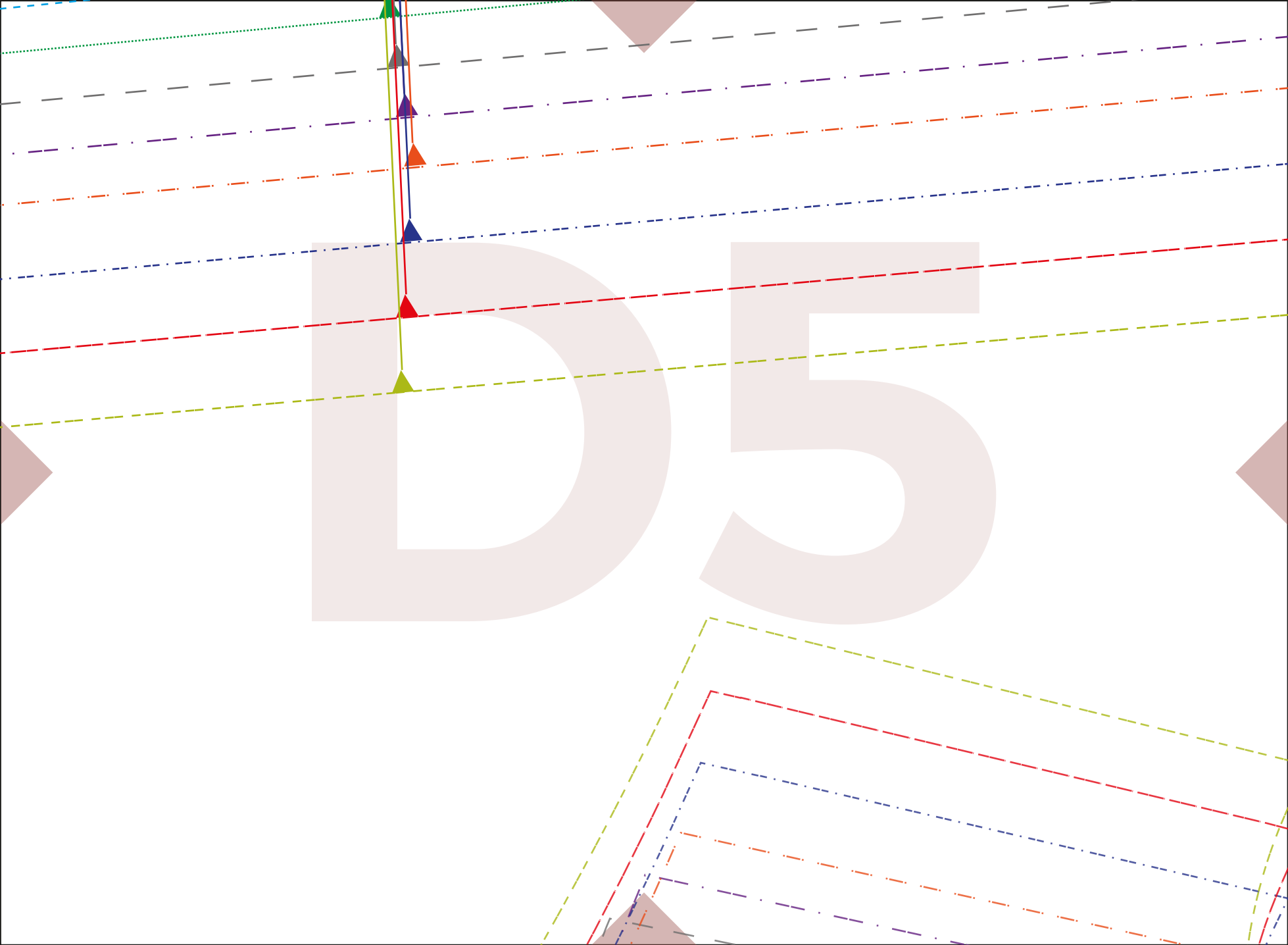
Front Bodice 2













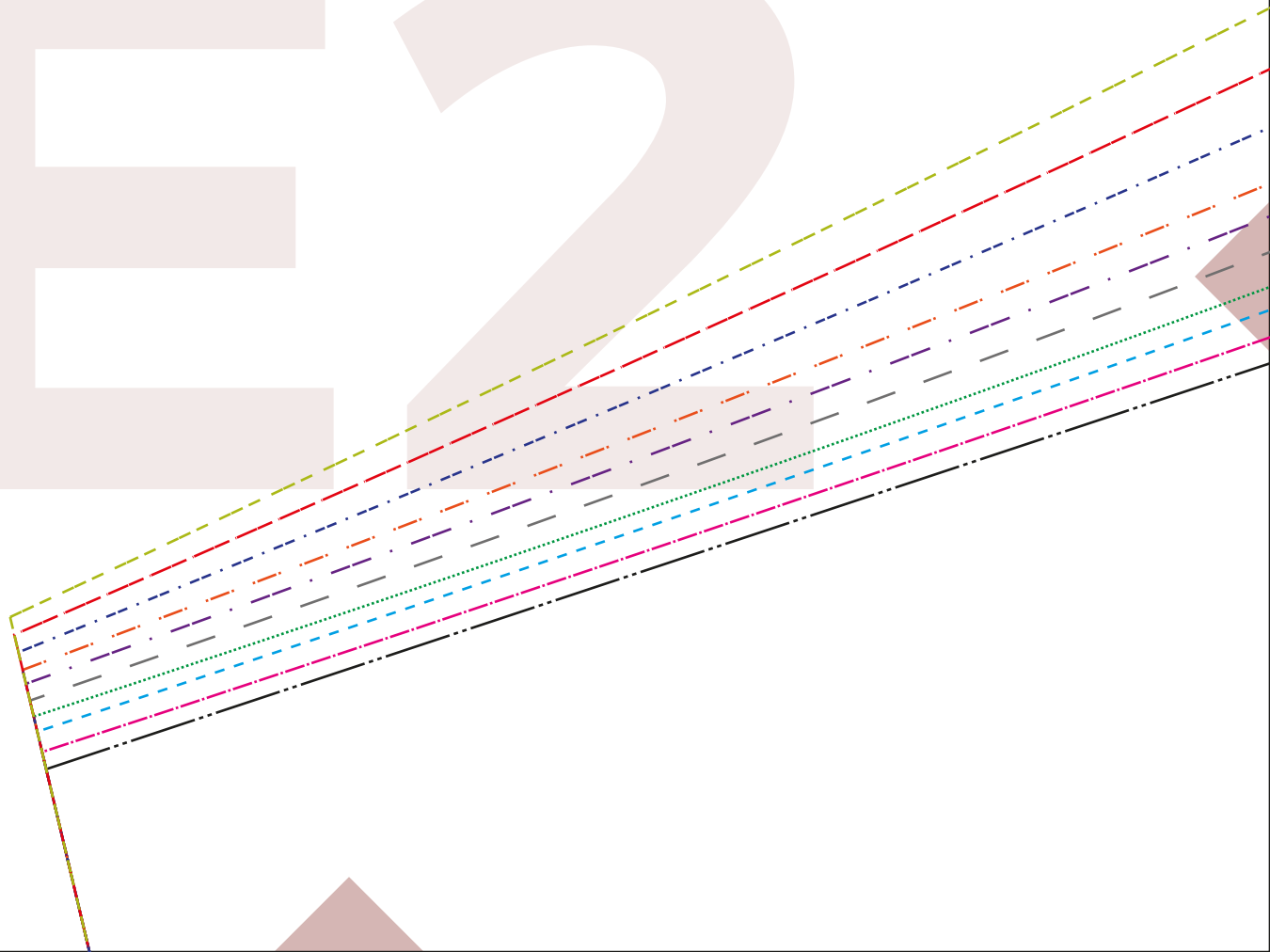
D6

E

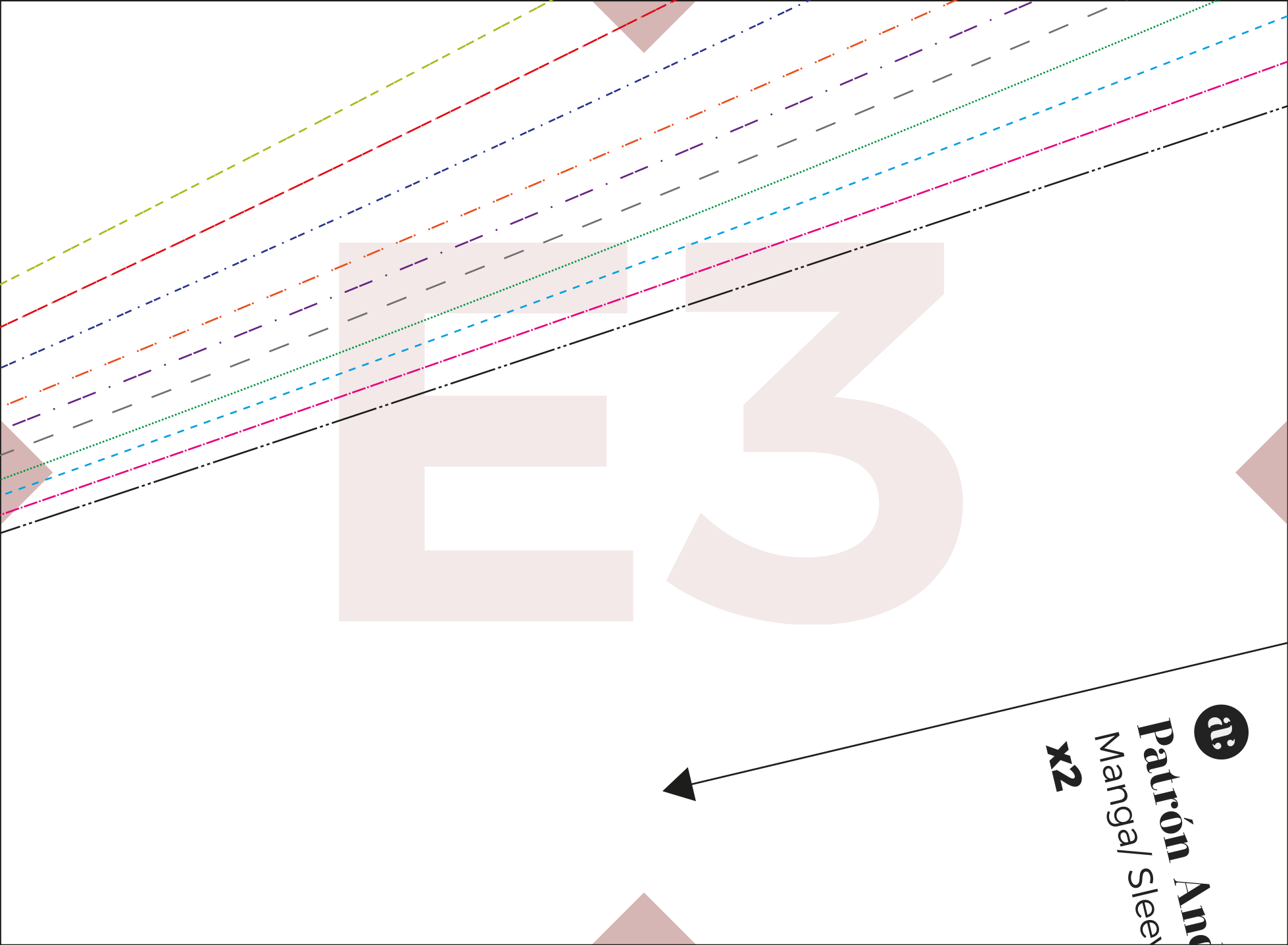
O

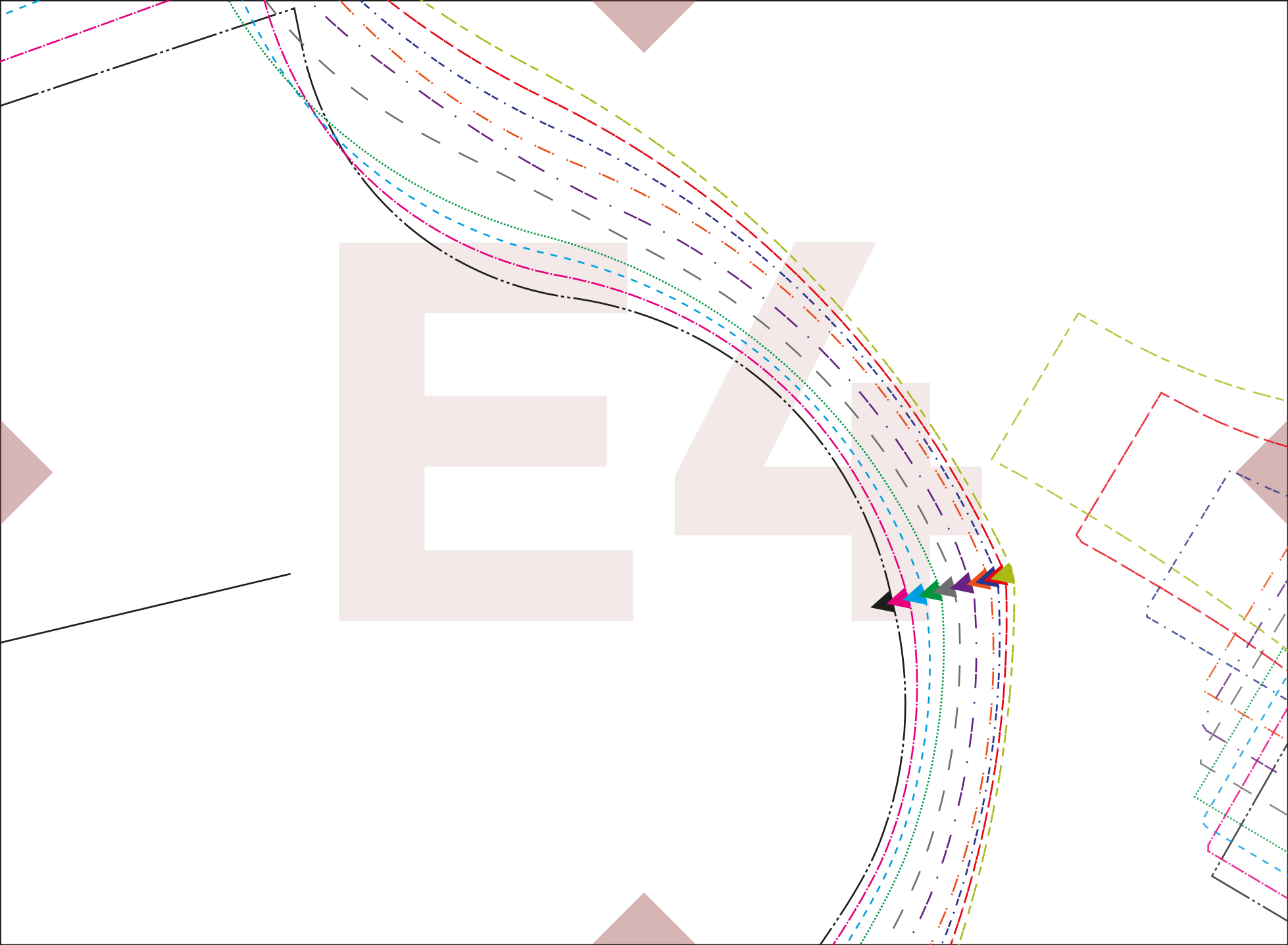


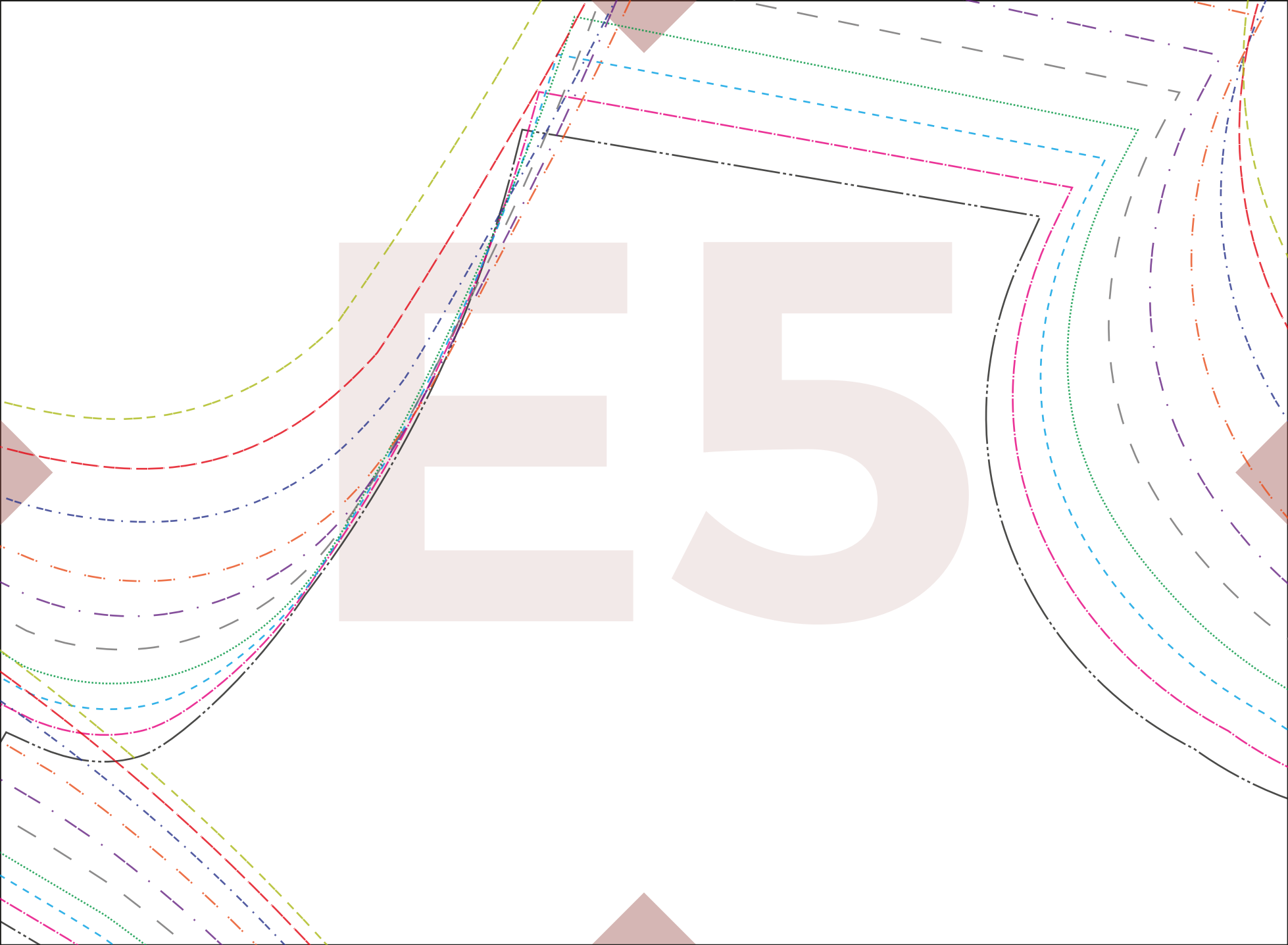
E2

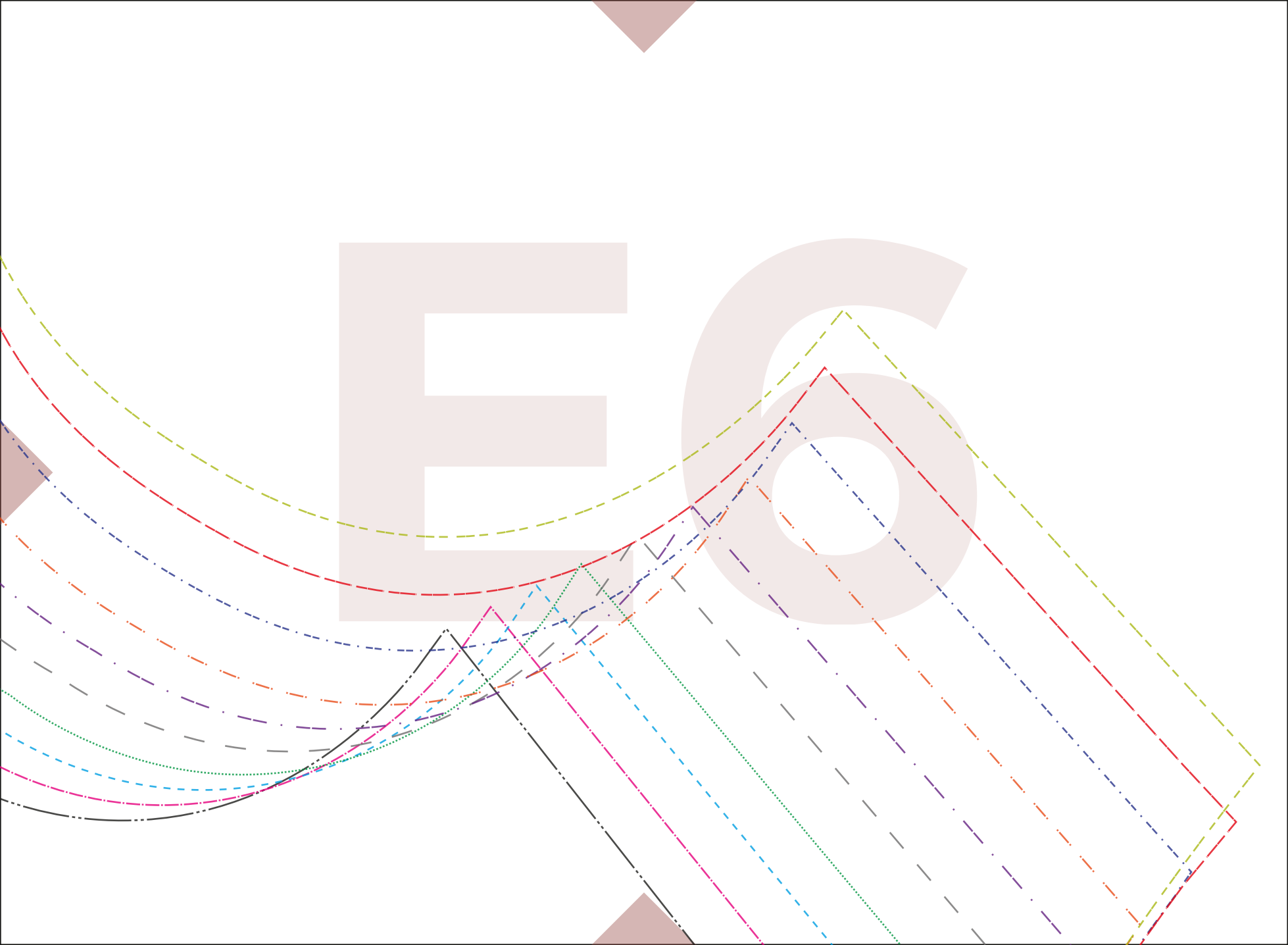


u:
Patrón And
Manga/ Sleep
x2

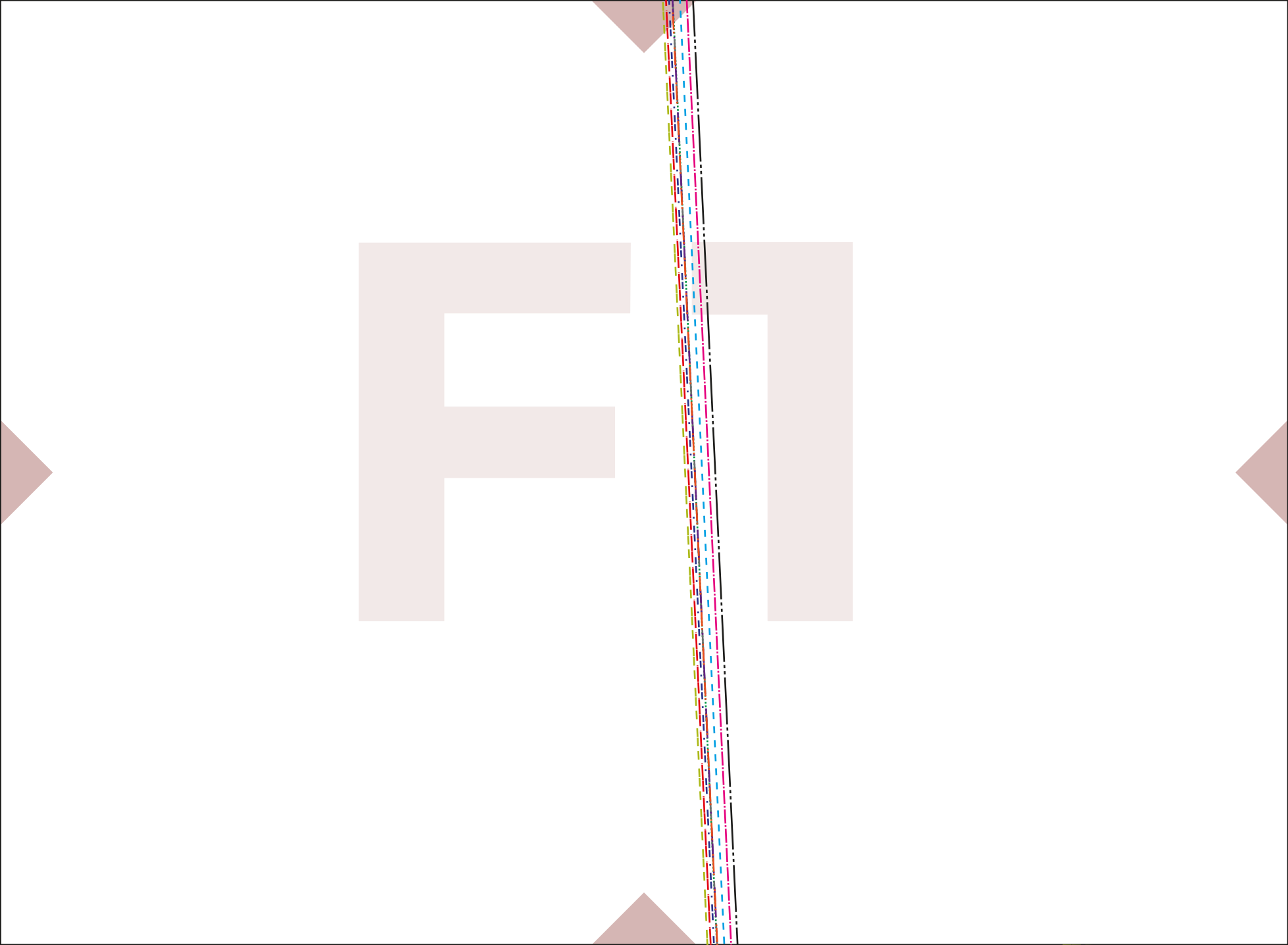




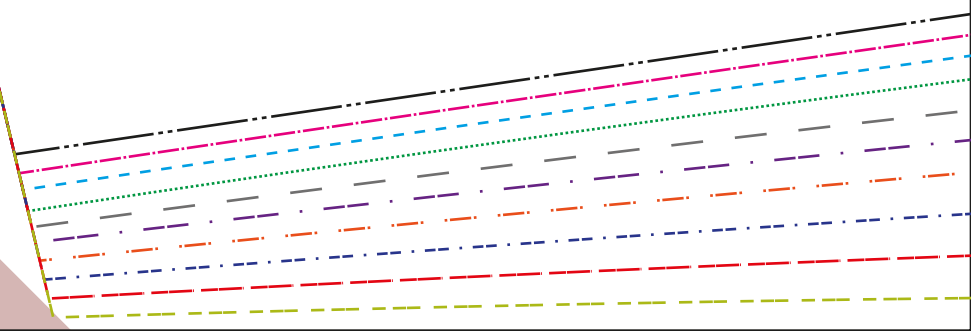




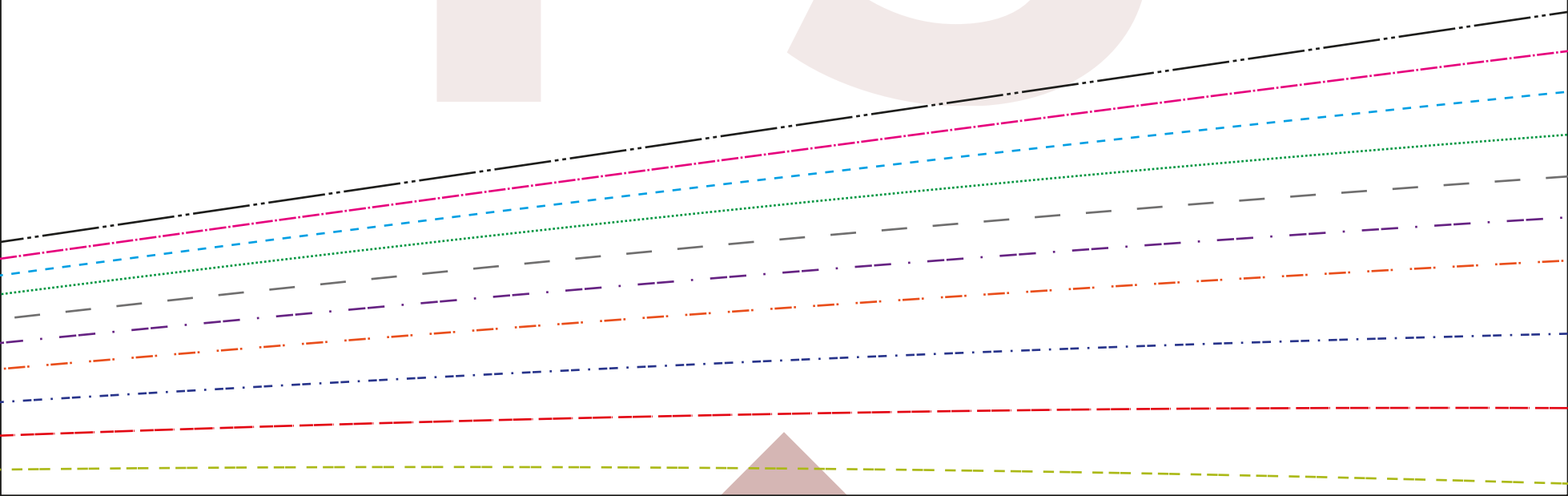
FO

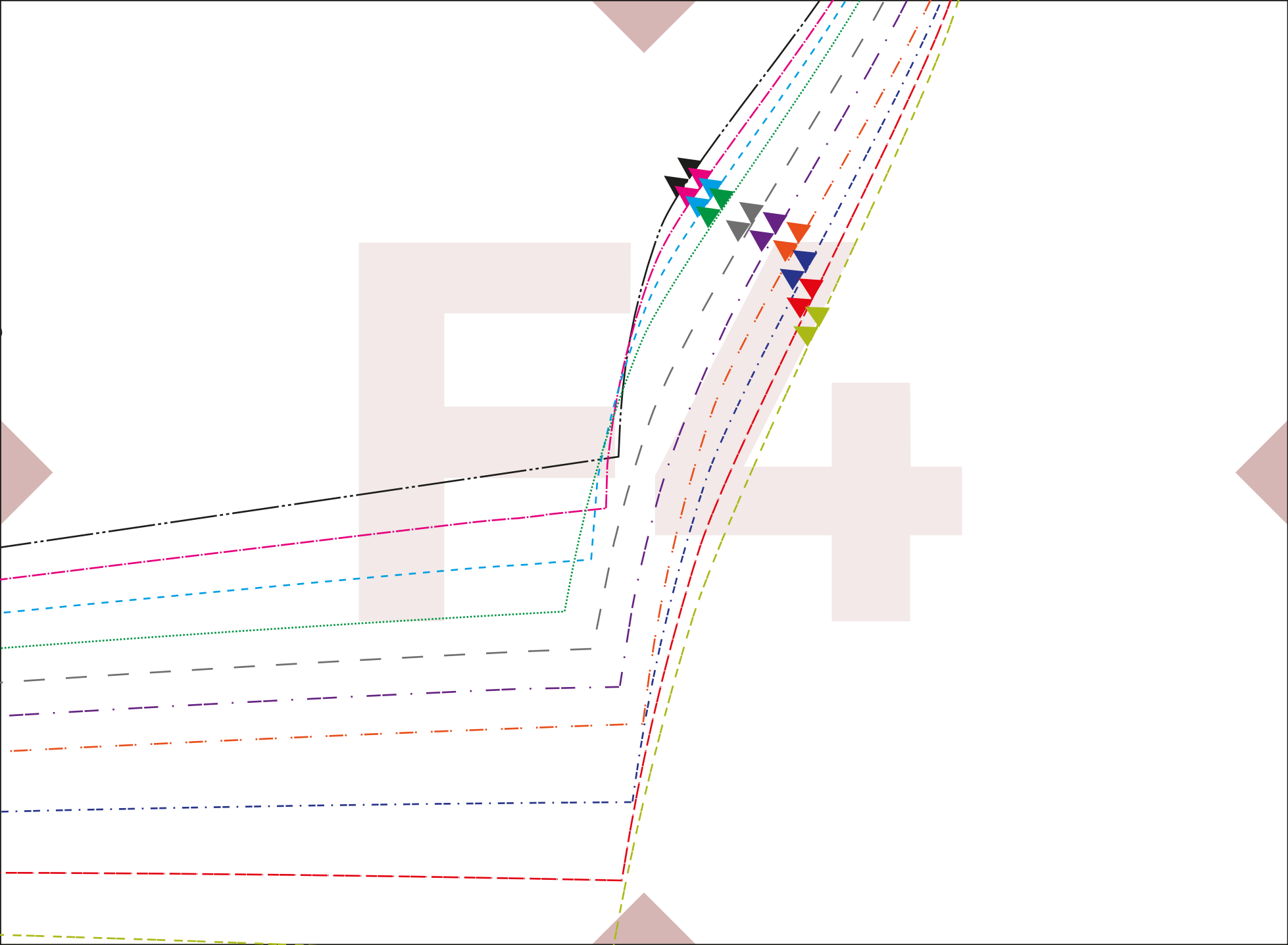


F2

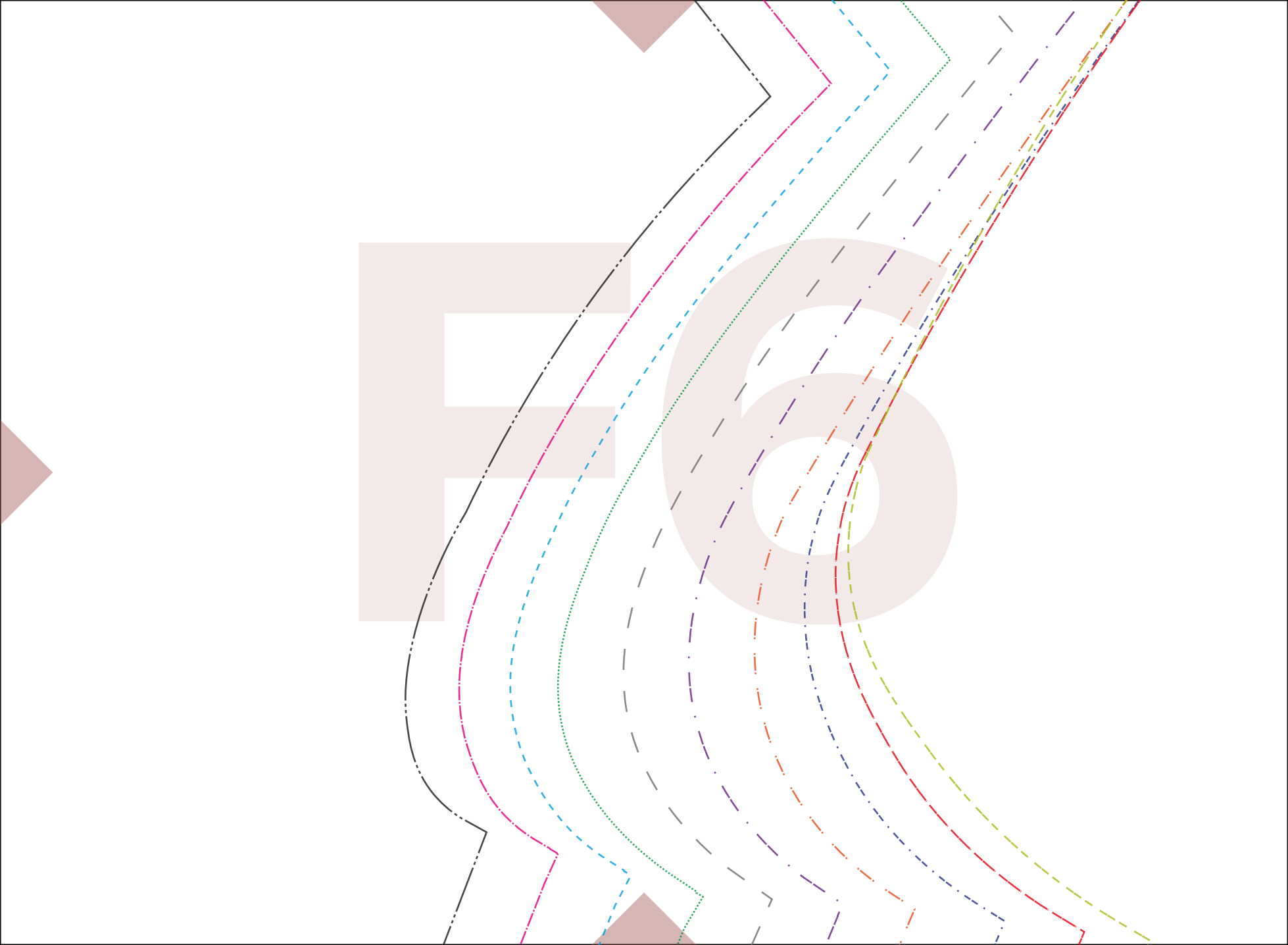


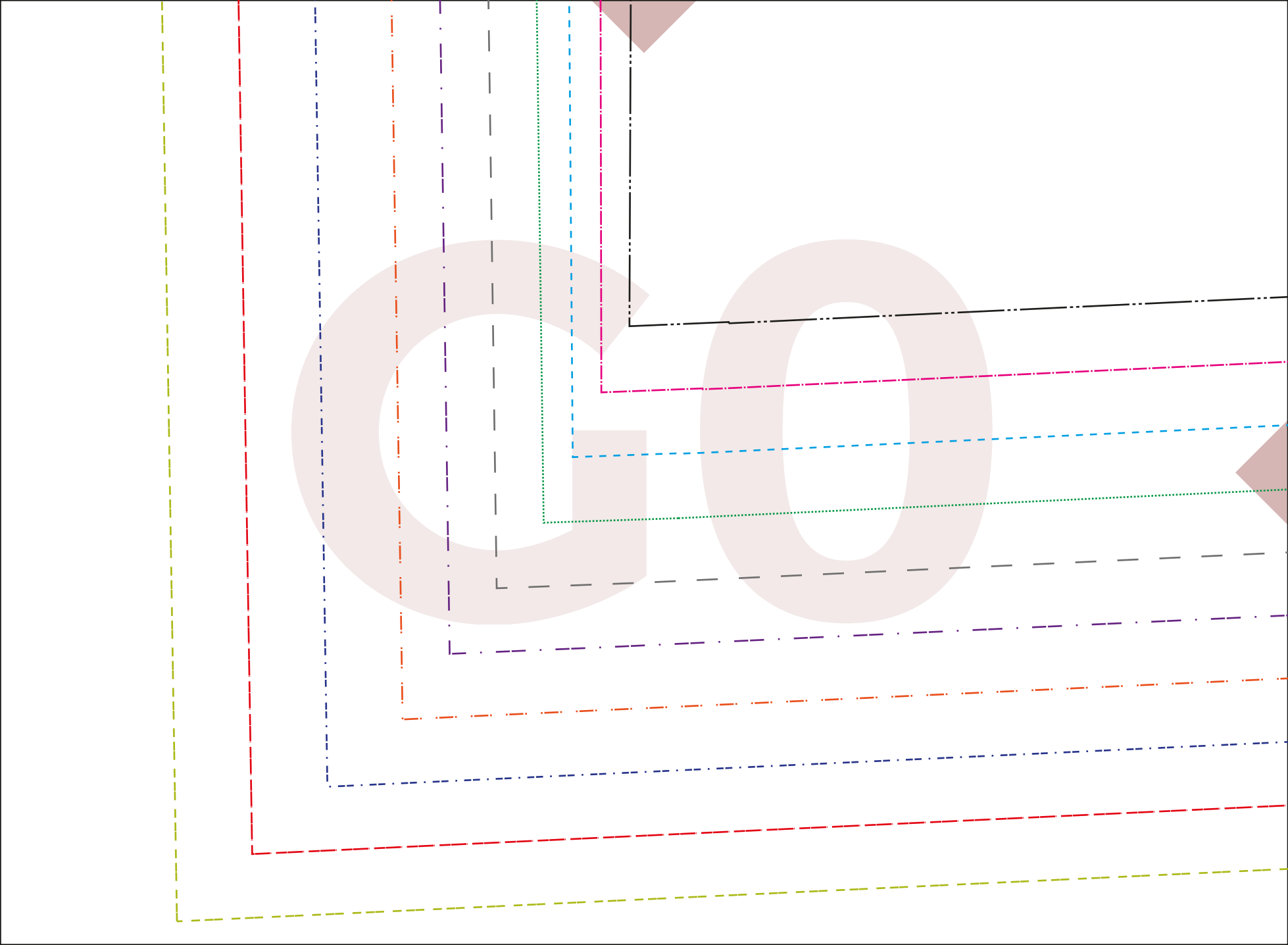
F3

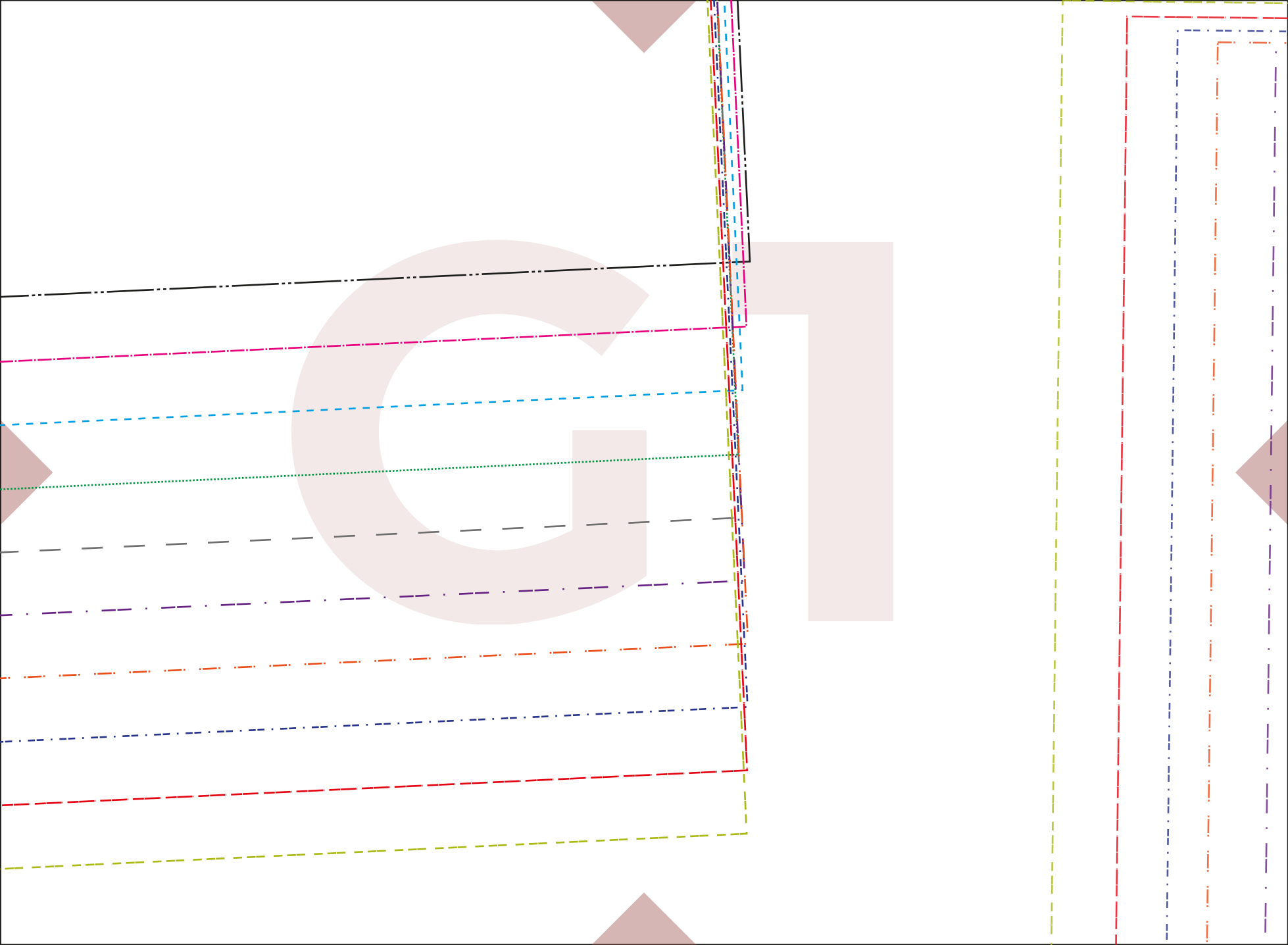












G2



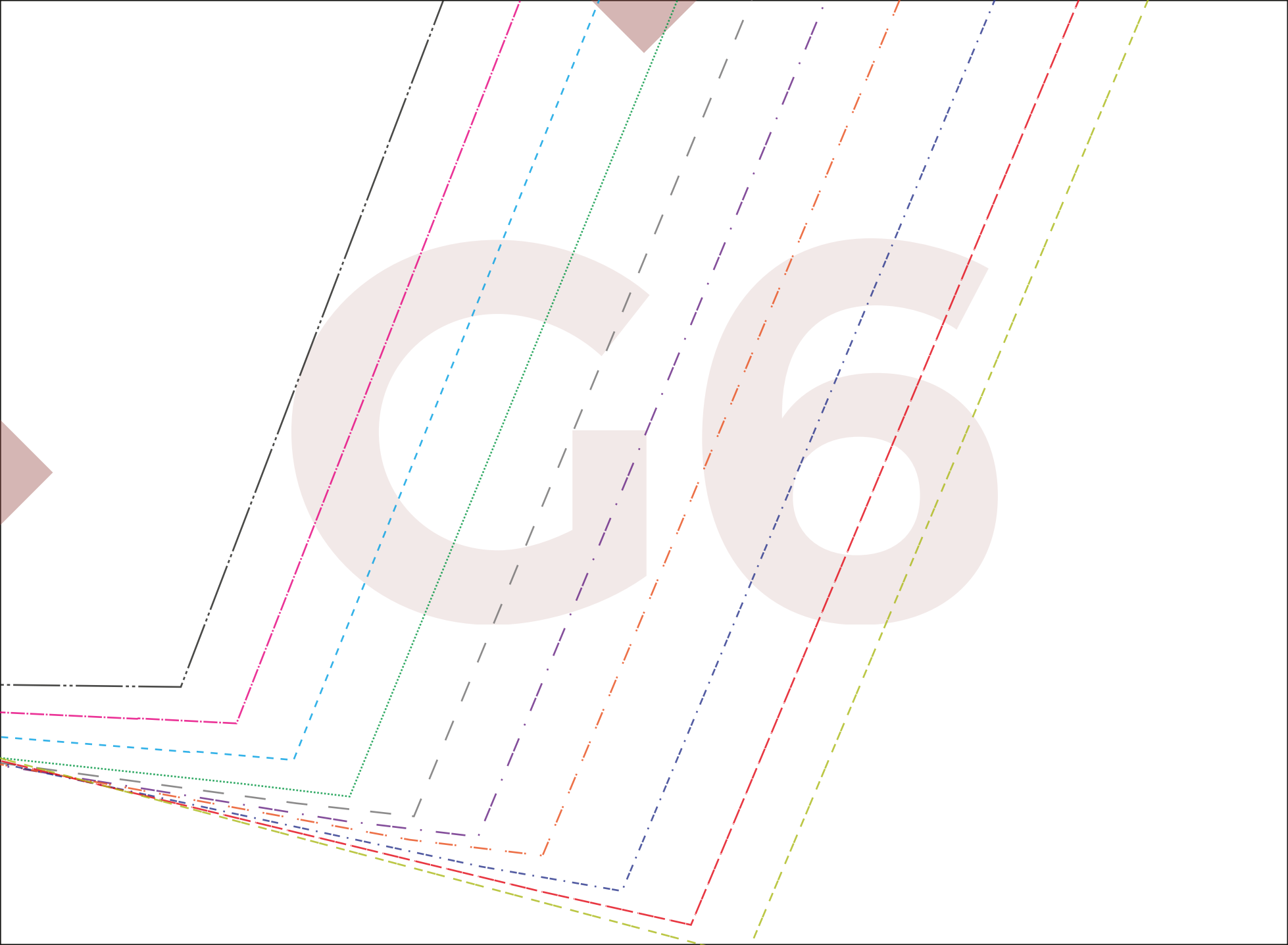
G3



Patrón Andi / Andi Patter
Delantero 1 / Front Bodice 1
x1

G4

G5



НТ

